

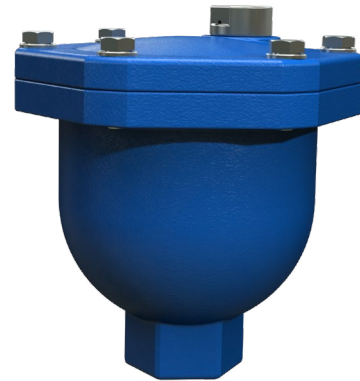
# AUTOMATIC AIR VALVE

## Model A72

BERMAD A72 is an automatic air release valve that allows efficient release of air pockets from pressurized pipe lines.

This valve provides excellent protection against air accumulation with improved sealing in low pressure conditions.

A72 Air Valve is manufactured for Bermad by Dogus Vana.



### Features & Benefits

- Efficient release of air pockets from pressurized pipe lines.
- Prevents leakage under low pressure conditions (3 psi; 0.2 bar).
- Compact, simple and reliable structure with fully corrosion resistant parts: Lower maintenance and increased life span.
- Factory approval and Quality Control.

### Inlet Connections

- Inlets: female threaded 1"; DN25

### Typical Applications

- Pipelines: Protection against air accumulation in high points and long horizontal lines.
- In proximity to control valves and water meters: Prevention of inaccurate pressure regulation and biased readings due to air existence in these devices.

### Materials

- Body: Ductile Iron, Stainless Steel 316, Cast Steel (WCB)
- Automatic Orifice: Stainless Steel 316
- Float Assembly: Polypropylene
- Elastomers: NBR

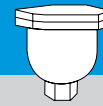
### Operational Data

- Pressure Rating: 250 psi; ISO PN16, 400 psi; ISO PN25, 600 psi; ISO PN40, 900 psi; ISO PN63
- Minimum operating pressure: 3 psi; 0.2 bar
- Maximum operating pressure: 250 psi; 16 bar, 400 psi; 25 bar, 600 psi; 40 bar, 900 psi; 63 bar
- Media and operating temperature: Water, 33-176°F; 1-80°C

### Orifice Specifications

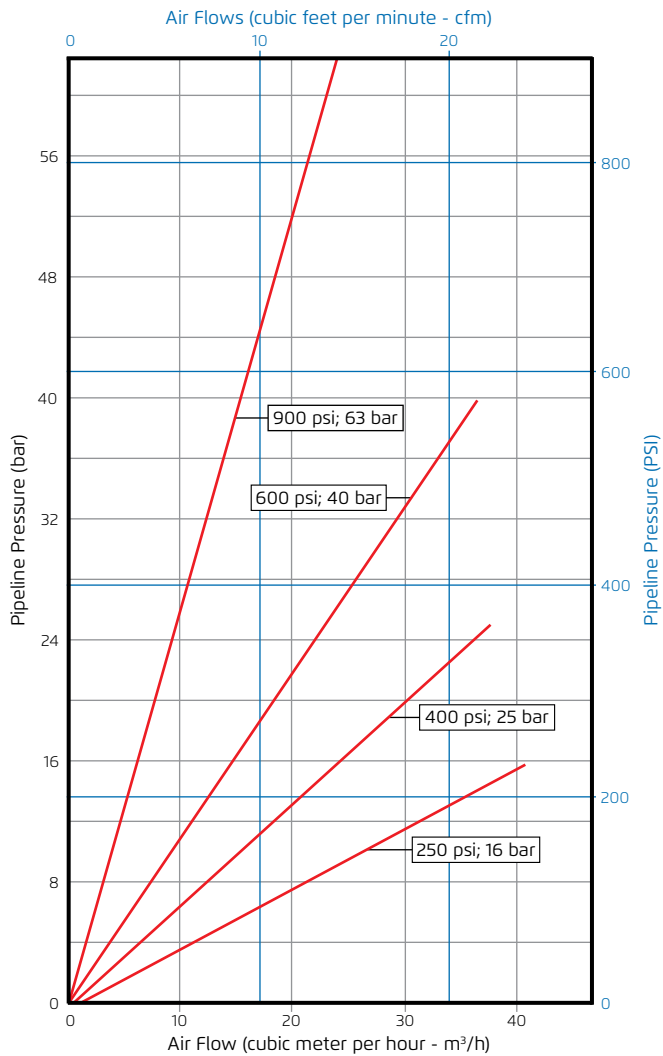
Inlet Sizes	Automatic Orifice Area			
	250 psi PN16	400 psi PN25	600 psi PN40	900 psi PN63
Inch	Sq inch	Sq inch	Sq inch	Sq inch
mm	Sq mm	Sq mm	Sq mm	Sq mm
1"	0.005	0.004	0.003	0.002
DN25	3.1	2.5	1.8	1.1

A72 is manufactured for BERMAD by a 3rd party  
All images in this catalog are for illustration only

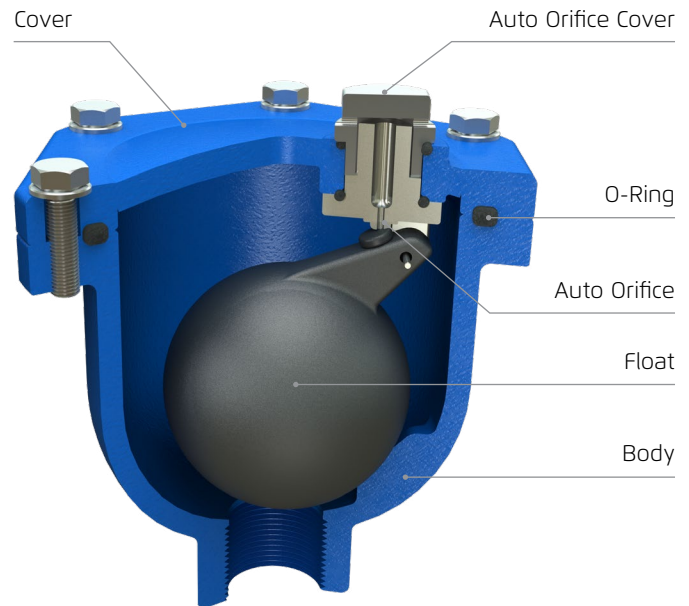


### Air Flow Performance Charts

#### Air Release (Pressurized Operation)



### Cutaway



### Dimensions & Weights

Inlet Size	Connection	Width (D)	Height (H)	Weight
inch	---	inch	inch	lbs
mm		mm	mm	Kg
1"	Threaded	5.906	6.693	9.92
DN25		150	170	4.5