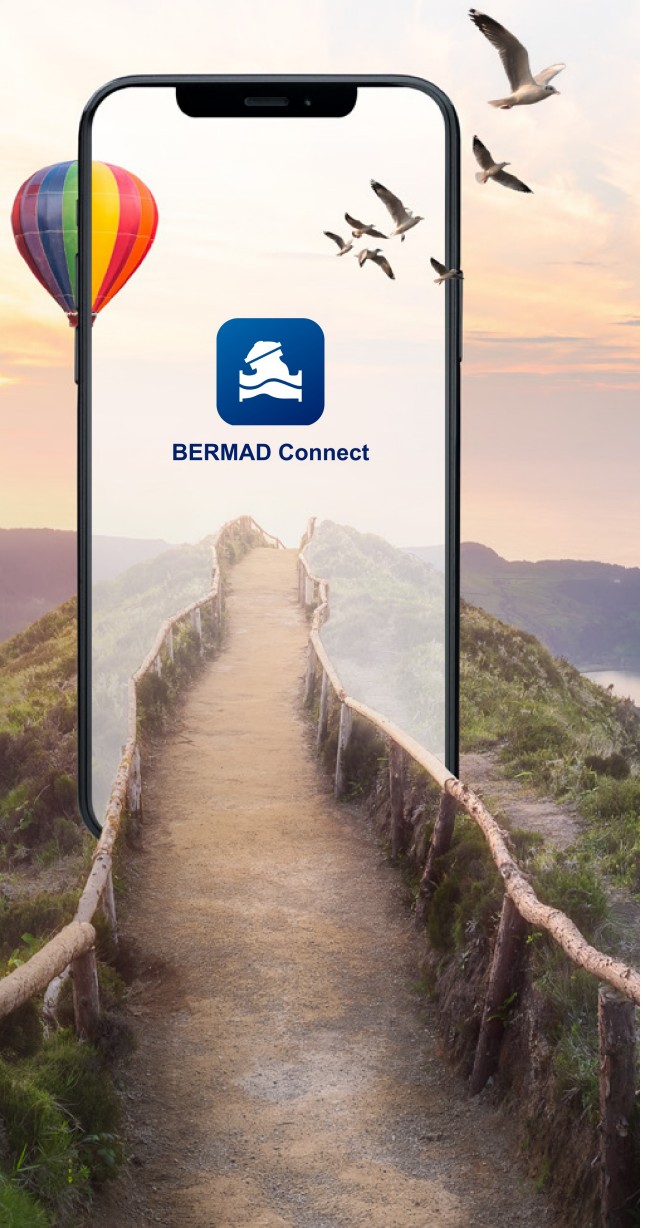


Your **link**
to BERMAD



BERMAD Connect **User Manual**

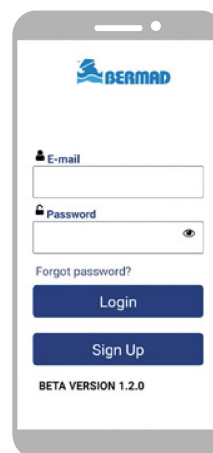
1

Newer BERMAD valves and other BERMAD equipment have a label with a QR code.



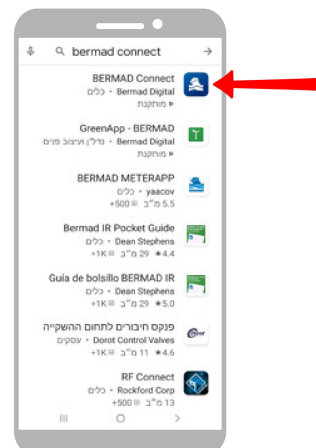
2

Scan the QR code on valve's label to enter BERMAD Connect via Web. Note that you can also access BERMAD Connect typing "<https://bermad.io/qr>" in the search bar of your browser.



3

Another good option is to download and install the BERMAD Connect App from either Google Play store or Apple's App Store. BERMAD Connect Smartphone App and Web access are linked to the same user account and database

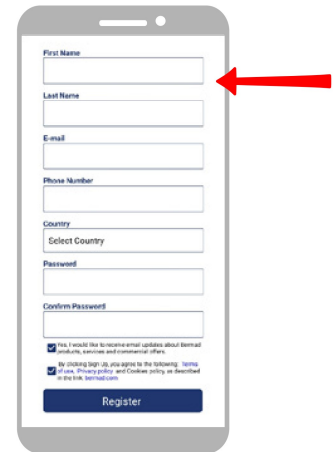




4

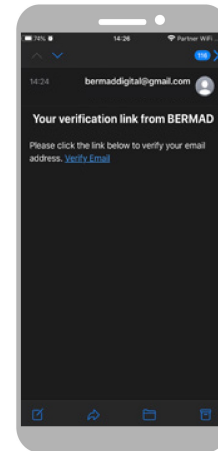
Existing user, log in to your account using your E-mail address and password

First time user, press the Sign Up button and fill in the required information. Accept the conditions and press Register.



5

After Register is pressed, you should get a verification e-mail with a confirmation link. Click on the link to confirm your Email address and to activate the BERMAD Connect account. This needs to be done only once..



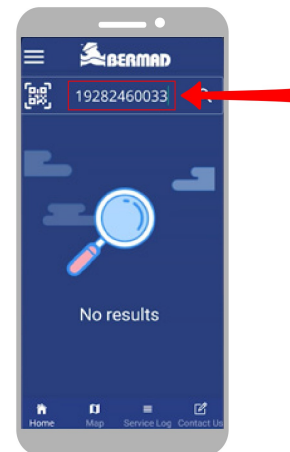
6

To get information about BERMAD's valves and equipment, you can use your mobile device to scan this code, by clicking the Scan button in BERMAD Connect App.



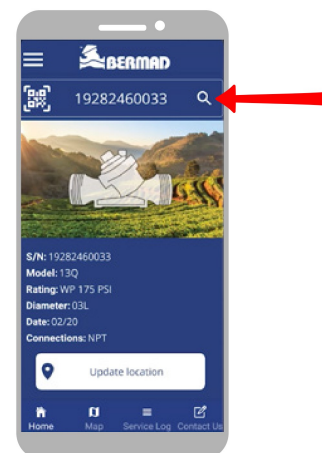
7

Note that older BERMAD equipment may not have a QR code, but you still have the option to enter the serial number by typing it in the BERMAD Connect App.



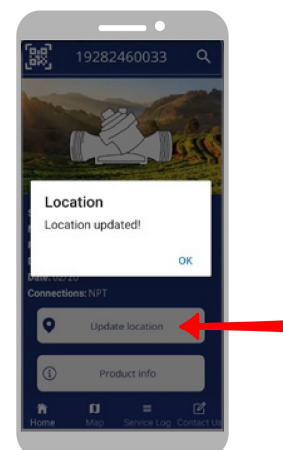
8

Click search, and the basic information of the valve will appear on the main screen.



9

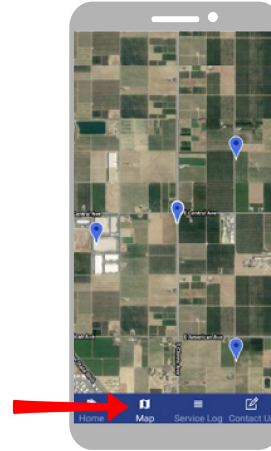
Add the location of the valve to your map by clicking the "Update Location" button.





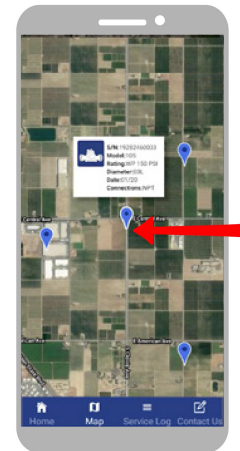
10

Click the Map button at the bottom of the screen to view a map with all of the valves you previously scanned and entered to BERMAD Connect.



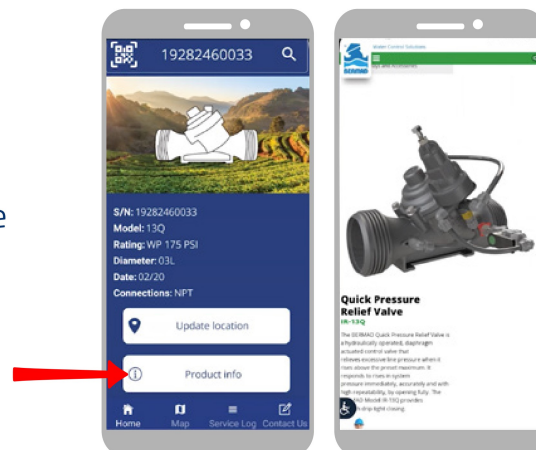
11

Click any of the valves on the map to get basic information about it.



12

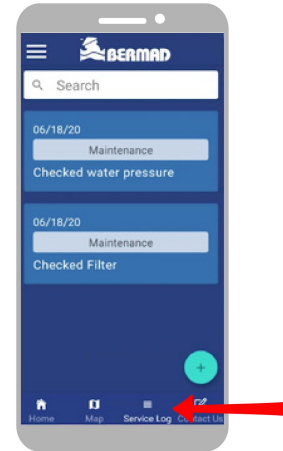
To get more detailed information – click the “Product Info” button at the bottom. This will direct you to BERMAD’s web site where you can find catalog pages, IOMs and more.






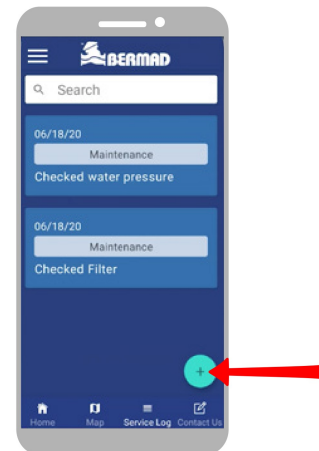
13

To record, or read service notes for the valve, click the "Service Log" button at the bottom.



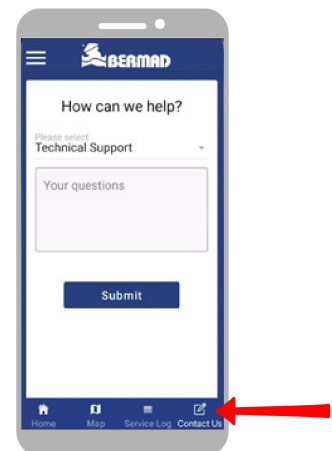
14

To add a service note, click the  button, select a subject from the "Subject" dropdown list, and enter the information in the "Description" field. Click the "Add" button to record the note, or "Cancel" to return to the Service Log.



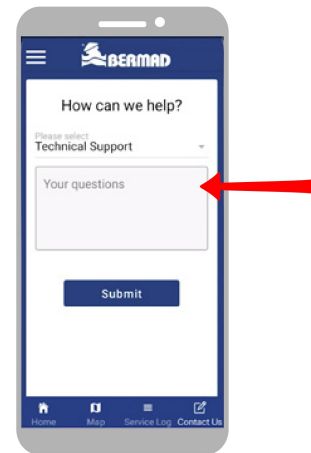
15

You can contact BERMAD support team with questions about the valve, or any other inquiry by clicking the "Contact Us" button.



16

Select a subject from the drop-down list, type your inquiry in the “Your question” field and click the “Submit” button. BERMAD’s personnel will contact you asap.



We're fully committed to expanding **BERMAD Connect**, so stay tuned and look for new features and updates!

