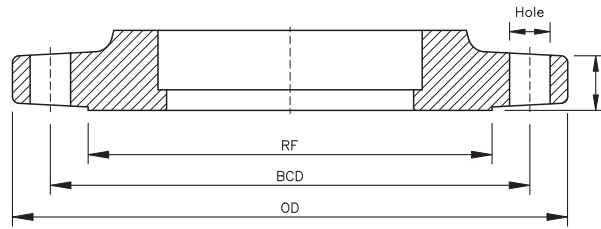




AS 4087 PN16
 compared to:
AS 2129 Table D
AS 2129 Table E



Pressure ratings:
 AS 2129 Table D - 7 bars
 AS 2129 Table E - 14 bars
 AS 4087 PN16 - 16 bars

Valve Selection			Bermad's 700 Sigma Valves						Standard's Dimensions			Remarks
Size	Standard	Class	OD	RF	t	BCD	Hole	No.	OD	RF	t	
40mm ; 1.5"	AS 2129	Table D	150	84	18	98	14	4	135	78	16	Same drilling as AS 4087 PN 16
	AS 2129	Table E	150	84	18	98	14	4	135	78	16	Same drilling as AS 4087 PN 16
	AS 4087	PN 16	150	84	18	98	14	4	135	78	16	
50mm ; 2"	AS 2129	Table D	165	99	20	114	18	4	150	90	17	Same drilling as AS 4087 PN 16
	AS 2129	Table E	165	99	20	114	18	4	150	90	19	Same drilling as AS 4087 PN 16
	AS 4087	PN 16	165	99	20	114	18	4	150	90	17	
65mm ; 2.5"	AS 2129	Table D	180	118	19	127	18	4	165	103	17	Same drilling as AS 4087 PN 16
	AS 2129	Table E	180	118	19	127	18	4	165	103	19	Same drilling as AS 4087 PN 16
	AS 4087	PN 16	180	118	19	127	18	4	165	103	17	
80mm ; 3"	AS 2129	Table D	200	127	22	146	18	4	185	122	19	Same drilling as AS 4087 PN 16
	AS 2129	Table E	200	127	22	146	18	4	185	122	19	Same drilling as AS 4087 PN 16
	AS 4087	PN 16	200	127	22	146	18	4	185	122	18	
100mm ; 4"	AS 2129	Table D	230	160	25	178	18	4	215	154	19	Same drilling as AS 4087 PN 16
	AS 2129	Table E	230	160	25	178	18	8	215	154	22	
	AS 4087	PN 16	230	160	25	178	18	4	215	154	20	
125mm ; 5"	AS 2129	Table D	270	184	19	210	18	8	255	186	21	
	AS 2129	Table E	270	184	19	210	18	8	255	186	22	
150mm ; 6"	AS 2129	Table D	305	218	27	235	18	8	280	211	21	Same drilling as AS 4087 PN 16
	AS 2129	Table E	305	218	27	235	22	8	280	207	22	
	AS 4087	PN 16	305	218	27	235	18	8	280	211	23	
200mm ; 8"	AS 2129	Table D	347	272	29	292	18	8	335	268	22	Same drilling as AS 4087 PN 16
	AS 2129	Table E	347	272	29	292	22	8	335	264	25	
	AS 4087	PN 16	347	272	29	292	18	8	335	268	23	
250mm ; 10"	AS 2129	Table D	405	324	30	356	22	8	405	328	25	Same drilling as AS 4087 PN 16
	AS 2129	Table E	405	324	30	356	22	12	405	328	25	
	AS 4087	PN 16	405	324	30	356	22	8	405	328	24	
300mm ; 12"	AS 2129	Table D	485	383	32	406	22	12	455	378	25	Same drilling as AS 4087 PN 16
	AS 2129	Table E	485	383	32	406	26	12	455	374	29	
	AS 4087	PN 16	485	383	32	406	22	12	455	378	30	
350mm ; 14"	AS 2129	Table D	555	438	35	470	26	12	525	438	29	Same drilling as AS 4087 PN 16
	AS 2129	Table E	555	438	35	470	26	12	525	438	32	Same drilling as AS 4087 PN 16
	AS 4087	PN 16	555	438	35	470	26	12	525	438	33	
400mm ; 16"	AS 2129	Table D	625	480	38	521	26	12	580	489	29	Same drilling as AS 4087 PN 16
	AS 2129	Table E	625	480	38	521	26	12	580	489	32	Same drilling as AS 4087 PN 16
	AS 4087	PN 16	625	480	38	521	26	12	580	489	33	
450mm ; 18"	AS 2129	Table D	635	530	40	584	26	12	640	532	32	Same drilling as AS 4087 PN 16
	AS 2129	Table E	635	530	40	584	26	16	640	552	35	
	AS 4087	PN 16	635	530	40	584	26	12	640	552	33	
500mm ; 20"	AS 2129	Table D	730	585	43	641	26	16	705	609	32	Same drilling as AS 4087 PN 16
	AS 2129	Table E	730	585	43	641	26	16	705	609	38	Same drilling as AS 4087 PN 16
	AS 4087	PN 16	730	585	43	641	26	16	705	609	35	
600mm ; 24"	AS 2129	Table D	845	690	47	756	30	16	825	720	35	Same drilling as AS 4087 PN 16
	AS 2129	Table E	845	690	47	756	33	16	825	717	41	
	AS 4087	PN 16	845	690	47	756	30	16	825	720	42	