

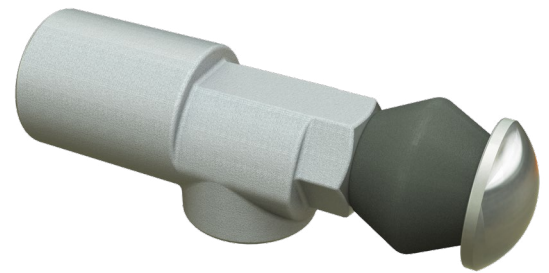
Automatic Drip Check

The Automatic Drip Check is used to drain system leakage or accumulated water/fluid from piping systems that need to be kept dry. It should be mounted horizontally at the lowest point of the piping system from which it drains, with the Outlet to the atmosphere and facing downwards.

Allow direct visual access to the Outlet, to enable immediate identification of any system leakage that might require attention.

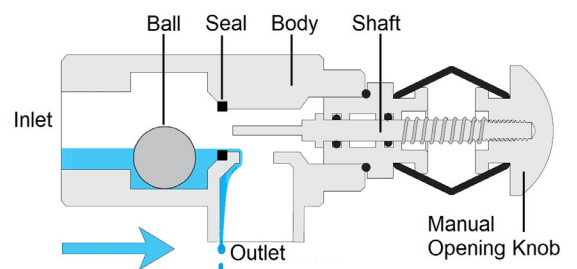
The normally open Automatic Drip Check will immediately close upon a sudden increase in flow and will automatically re-open upon a loss of system pressure.

The spring loaded manual opening knob can be used to verify that the piping is completely drained.

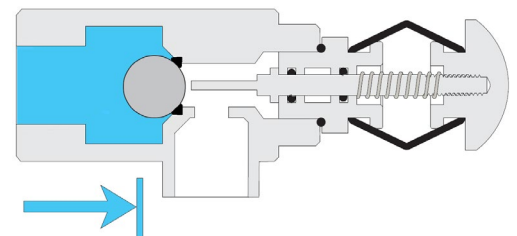


(for illustration only)

Operation



Open: The normally open Automatic Drip Check drains accumulated water/fluid from condensation/system leakage from the piping.



Closed: When the system piping suddenly fills with water/fluid the Automatic Drip Check closes.

Construction Materials

Standard

- Body: Stainless Steel 316 ASTM A351 Grade CF8M
- Stem: Stainless Steel 316
- Seals: EPDM
- Ball: Stainless Steel 316

Ni.Al.Bronze (Seawater) Construction

- Body: Ni.Al. Bronze ASTM B148 C95800
- Stem: Monel 400
- Seals: EPDM
- Ball: Ni.Al. Bronze

Pressure Rating

- 25 bar (365 psi)

Hydraulic Properties

- Automatically closes when the inlet pressure reaches 0.12 bar (1.76 psi), maximum, when the outlet drain is vented to the atmosphere.
- Minimum required flow for closing: 554 l/h (2.44 gpm)
- Re-opens automatically when the inlet pressure drops to 0.04 bar (0.59 psi), minimum

Connections

- Inlet: 1/2" NPT female
- Drain: 1/2" NPT female

Approvals

- UL-Listed ⁽¹⁾
- EN and VdS compliant
- FM-Approved ⁽¹⁾

Notes:

⁽¹⁾ When installed on Approved/Listed BERMAD Deluge Valves

Dimensions

