



The Measure of the Future

Frequency Converter FM-1D/K

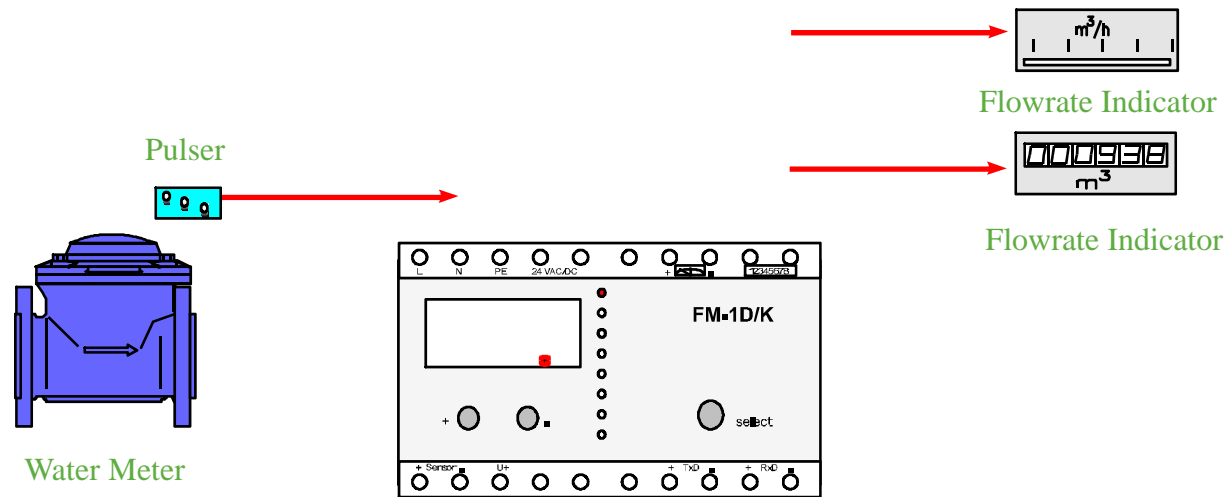
Michael André

03.03.2009

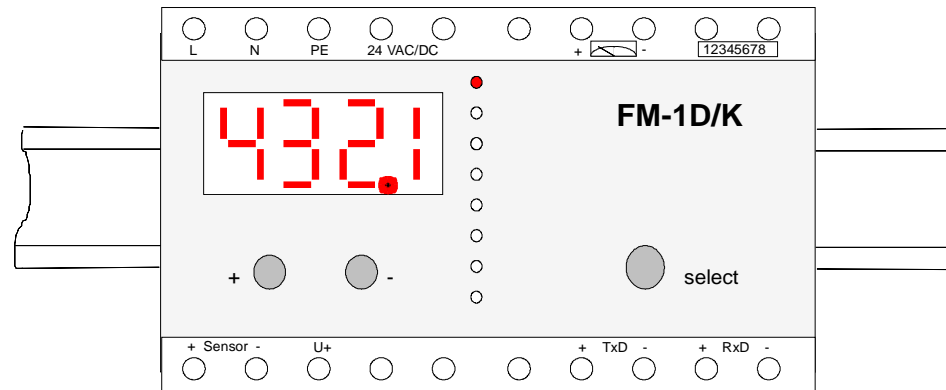
FM-1D/K: Features

- o Simple key input calibration
- o Integrated display
- o Easy mounting
- o Serial interface
- o Current output 0...20 or 4...20 mA
- o Pulse output with divisor
- o Relay output
- o Wide range of pulsers
- o Input pulse monitoring
- o Test mode

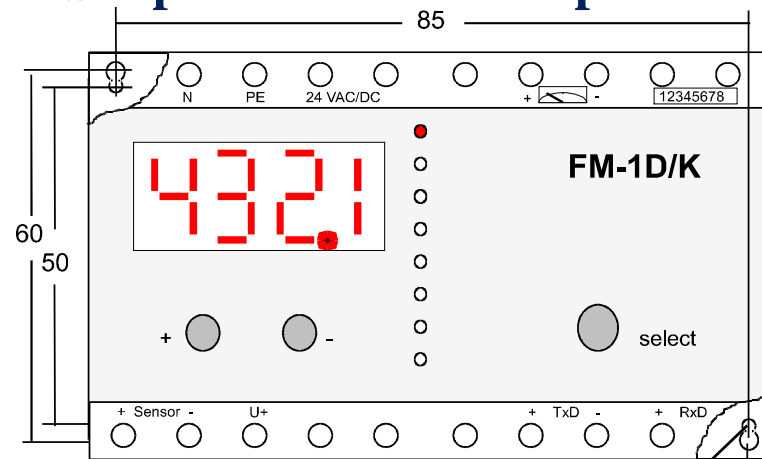
FM-1D/K: Connection Diagramm



FM-1D/K: Mounting



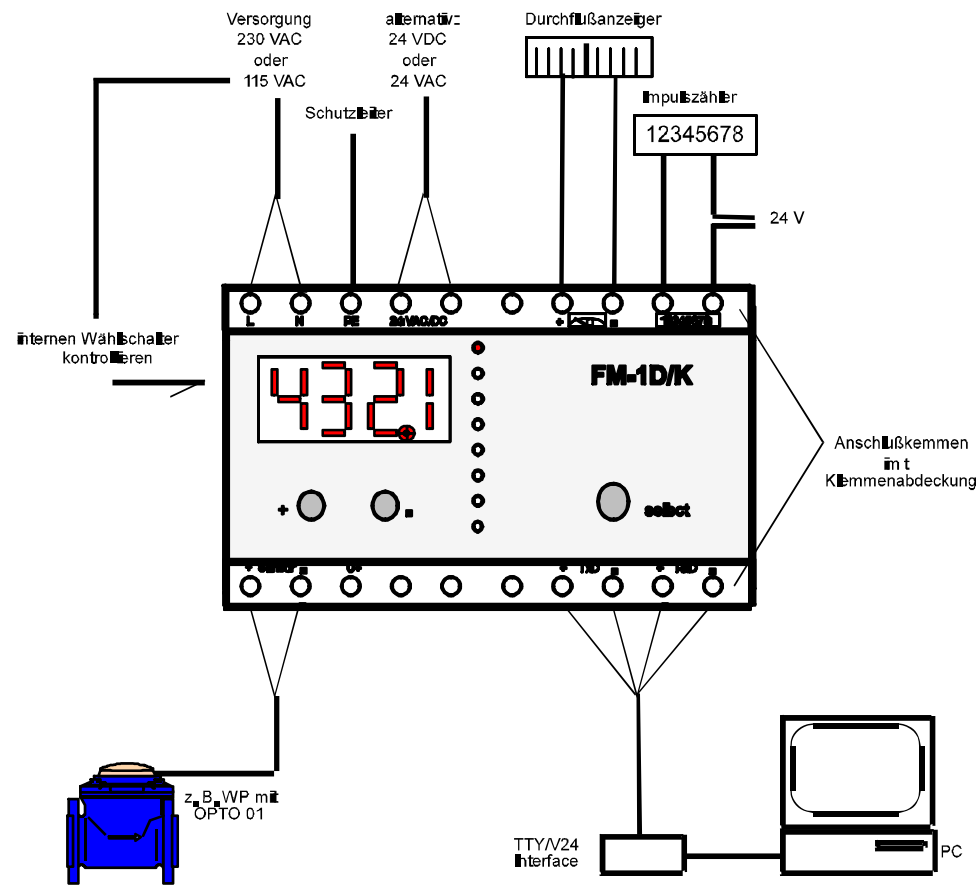
•Snap onto a 35 mm Tophat rail



•Wall Mounting with 2 Screws

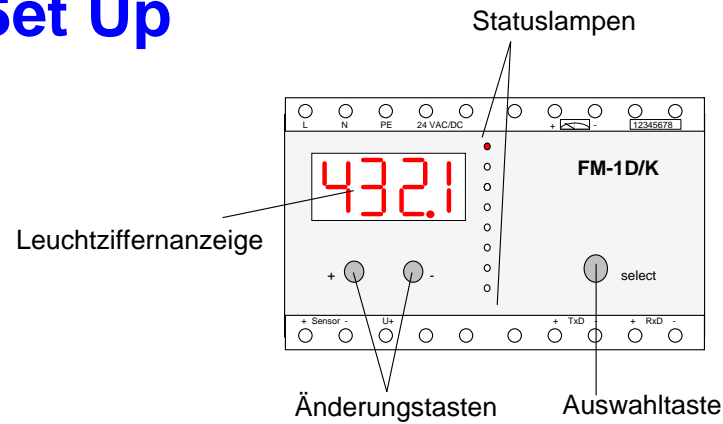
M4 M5

FM-1D/K: Connection example




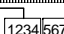



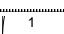
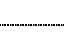
FMD5D

FM-1D/K: Set Up

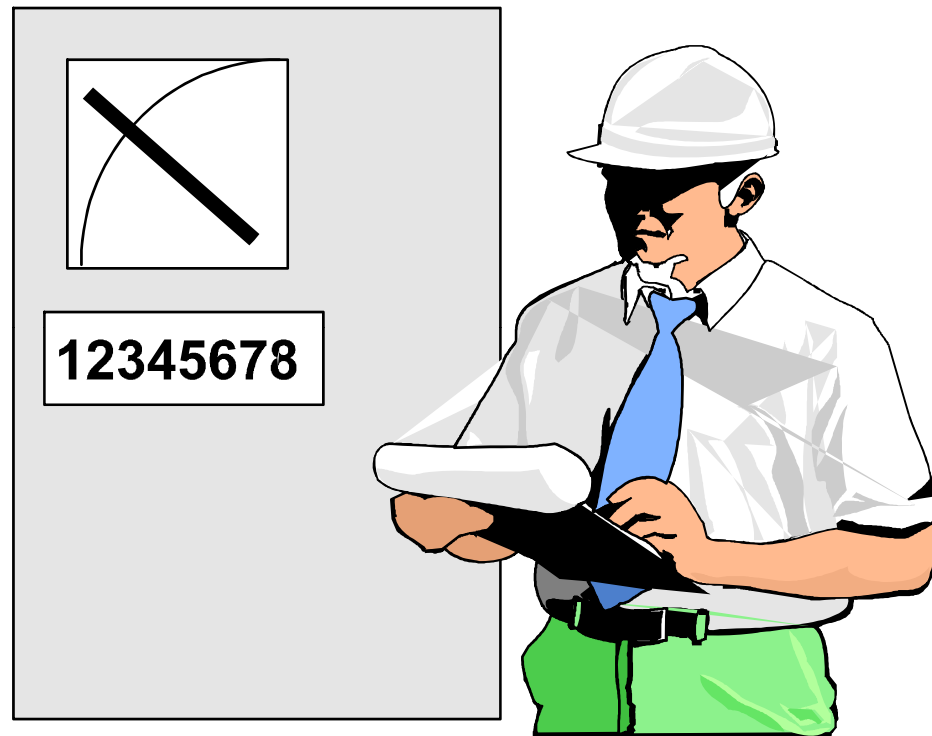


Display



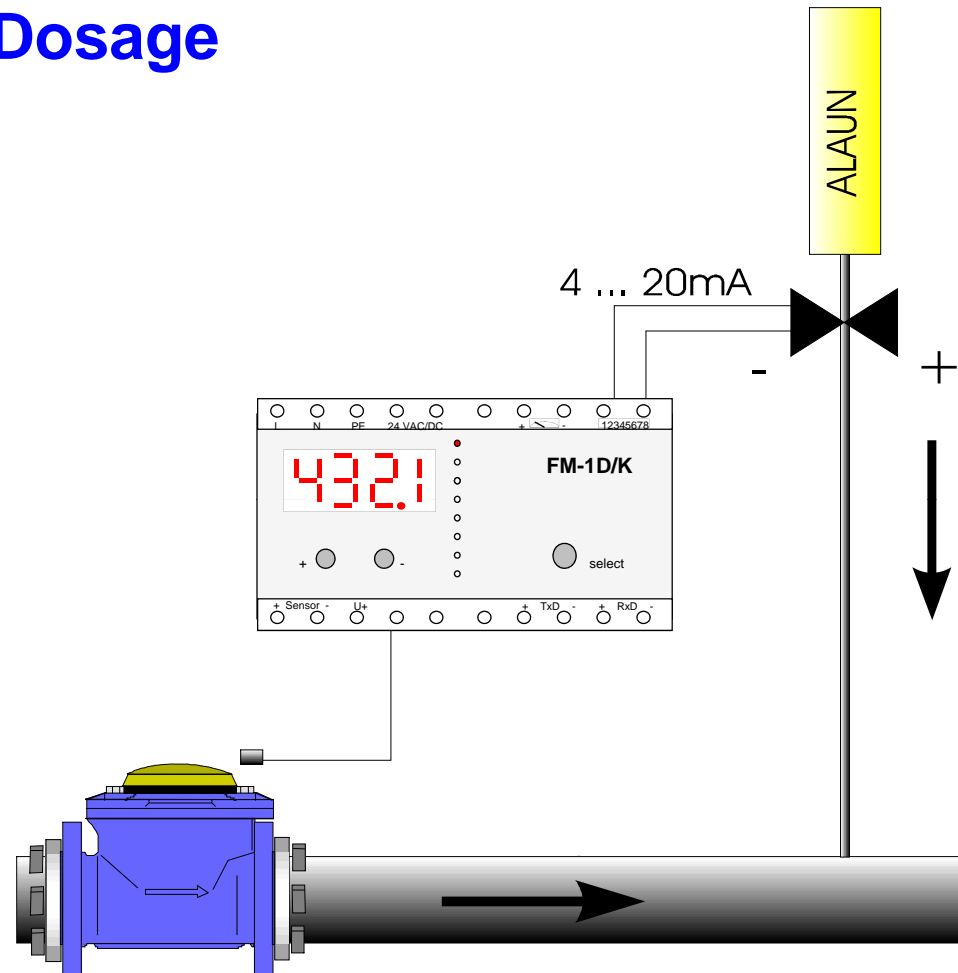
Status LEDs	Program mode	Setting
●  m ³ /h	Flowrate range	End value directly in m ³ /h from 1 ... 9999 m ³ /h
●  1234 5678 m ³	Counter reading	Setting the start value; Digits 1...4 and 5...8 are set separately
○ 	Pulse validity input	Input in liters per pulse
○ 	Pulse validity output	From 0.1 ... 9999 m ³ per pulse
○ 	Current output	Selectable 0... 20 mA or 4... 20 mA
●  1 ... 14	Response time	Setting from 1 (no damping) to 14 (large damping)
○ 	Test mode	Checking the cabling and function of remote totalizer and flowrate indicator

FM Application 1



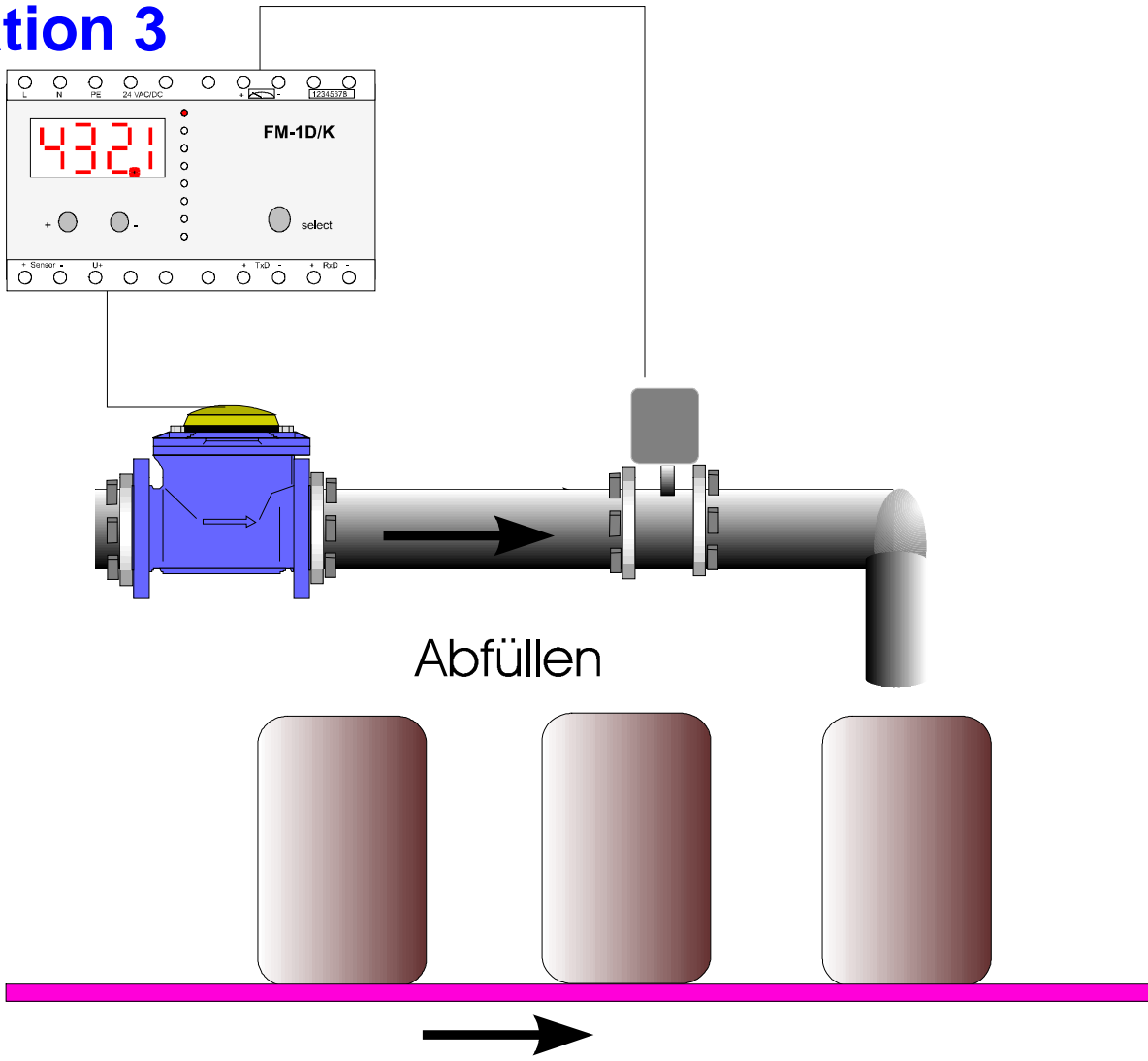
Durchflußanzeige
Fernzählung

FM Application 2: Dosage

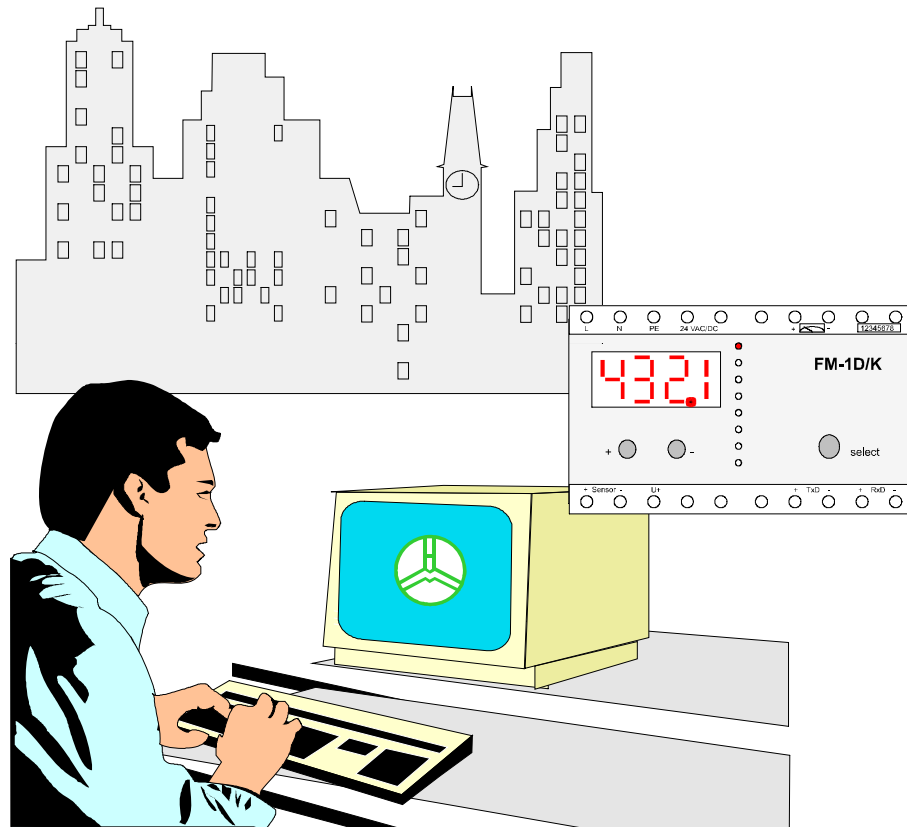


Dosierung

FM Application 3



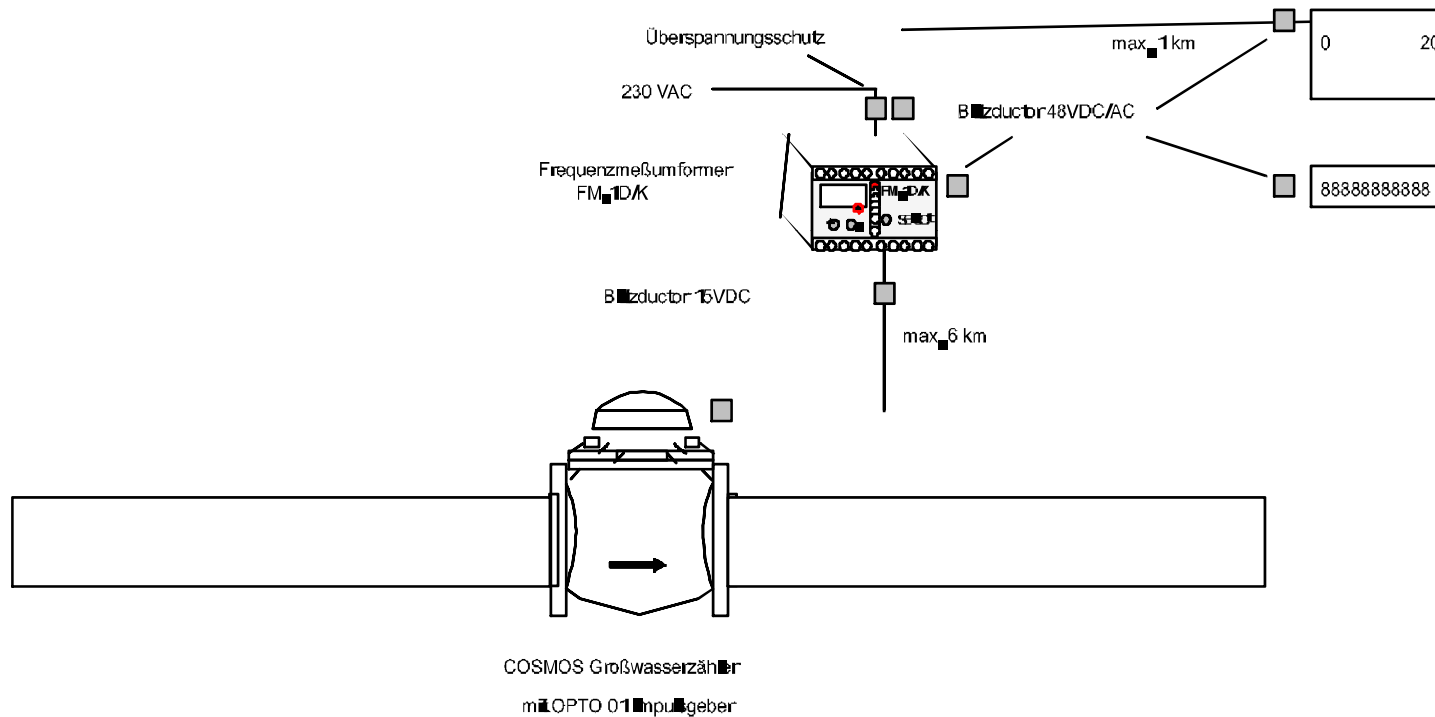
FM Application 4



Remote reading

FM Empfohlene Blitzschutzmaßnahmen

Empfohlene Blitzschutzmaßnahmen zum FM-1D/K





The Measure of the Future

**Vielen Dank für ihre
Aufmerksamkeit**