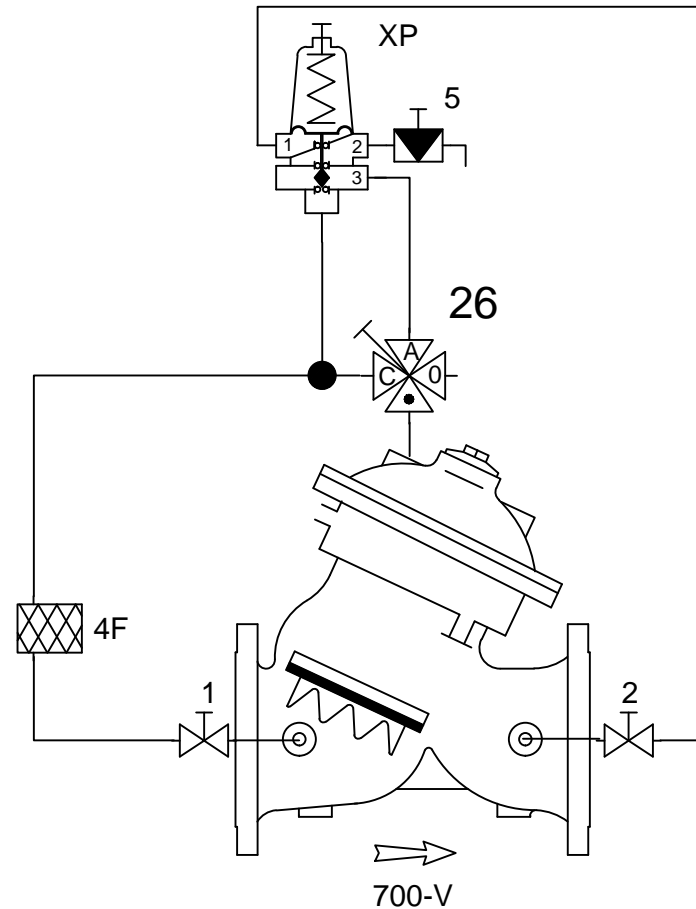
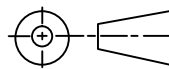


Components	
#1	Inlet ball valve (filter isolation)
#2	Outlet ball valve (static sense line)
#4F	Bermad LC filter
#5	Needle valve (controlling opening speed)
#26	Three way valve for manual "close", "open" & "auto"
#XP	Brass body PCX-A-M (sharp) three way pilot with fine tolerance
#700-V	Double chamber 700 series with V port and no psring
Tubing	3/8" copper



Pilot data - PCX-A-M (sharp c/w SS springs)  
 Spring J 0.2 - 1.8 bar regulation (1.2m DB)  
 Spring K 0.5 - 3 bar regulation (1.7m DB)  
 Spring N 0.8 - 6.5 bar regulation (2.9m DB)  
 Spring V 1.0 - 10 bar regulation  
 Spring P 1.0 - 16 bar regulation  
 Note : softer the spring tighter the hysteresis

Not to Scale



Email Address  
 colin@bermad.com.au

Revision Number / Date

**Bermad Water Technologies**

7 Inglewood Drive , Thomastown , Vic 3074  
 Ph (03) 9464 5949 Fax (03) 9464 2382

Project : **Bermad 720BXW-PCX-SHARP**  
 Pressure reduction three way  
 double chamber  
 Sizes 40mm - 300mm

Drawn by :  
 Date :

Drawing Number :

