

Pneumatically Controlled Deluge Valve with Local Reset Model FP 400E - 4M

The BERMAD model 400E-4M is an elastomeric, hydraulic line pressure operated deluge valve, designed specifically for advanced fire protection systems, and the latest industry standards.

The 400E-4M is activated by a pneumatic relay valve which latches the main valve open until locally reset. The optional valve position indicator can include a limit switch ideal for Fire & Gas monitoring systems.

The 400E-4M is suitable for systems with open nozzles for water or foam discharge.



(for Illustration Only)

Benefits and Features

■ Safety and reliability

- Time proven, simple design with a fail safe actuation
- Single piece, rugged elastomeric diaphragm seal - VRSD technology
- Obstacle-free, uninterrupted flow path
- No mechanical moving parts
- Latches open: remains open until reset locally
- Valve position limit switches (optional)
- Meets the requirements of industry standards

■ Quick and easy maintenance

- Designed for high reliability and easy maintenance
- In-line serviceable
- Fast and easy cover removal

Typical Applications

- Fusible plug loops
- Automatic water spray systems
- Foam applications
- Corrosive water supplies
- Freezing Environments

Approvals



UL-Listed
Special System Water Control
Valves, Deluge Type (VLFT)
Sizes 1½" - 10"



Det Norske Veritas
Type Approval
Sizes 1½" - 12"



American Bureau of Shipping
Type Approval
Sizes 1½" - 12"

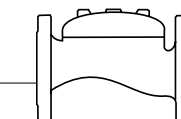


Lloyd's Register
Type Approval
Sizes 1½" - 10"

Additional Features

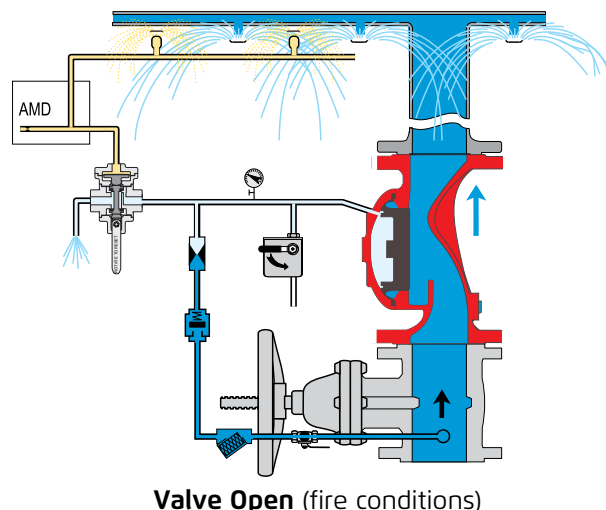
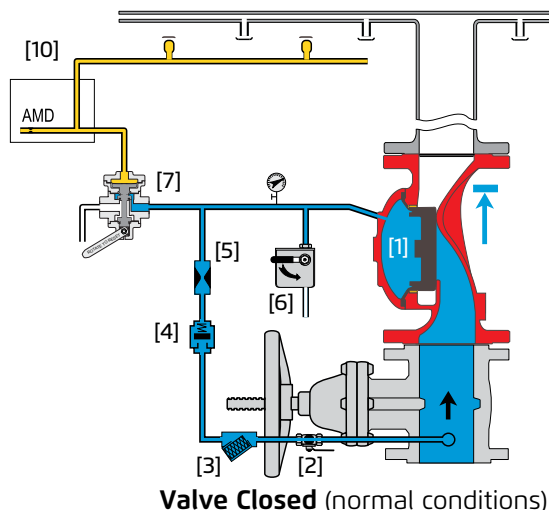
- Valve position limit switches
- Alarm pressure switch
- Sea water compatibility
- Air maintenance device

* For more additional features, see code designation on last page.



Operation

(for illustrative purposes only)

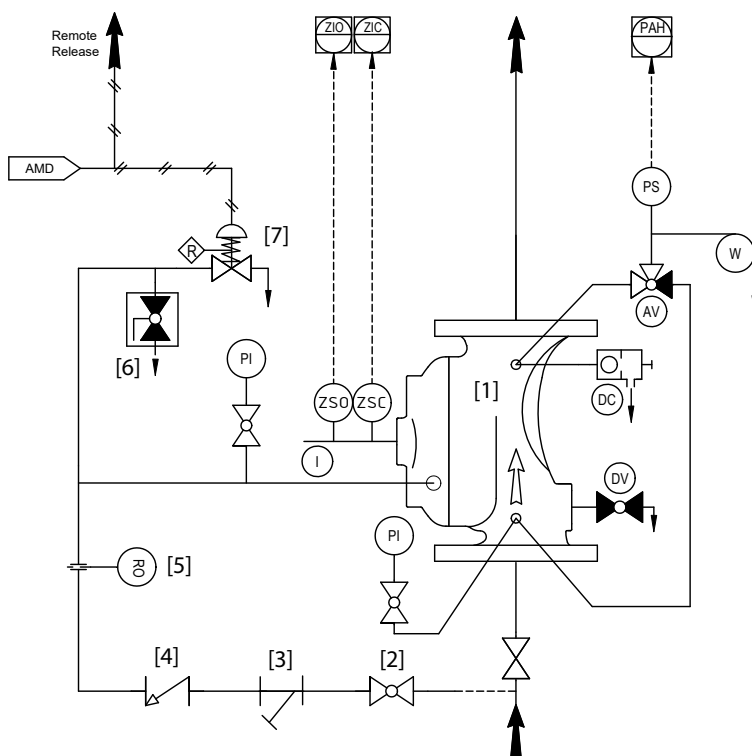


The BERMAD model 400E-4M is held closed by water pressure in the control chamber [1]. Upon release of pressure from the control chamber, the valve opens.

Under NORMAL conditions, water pressure is supplied to the control chamber via the priming line [2] strainer [3] and restriction orifice [5] it is then trapped in the control chamber by a check valve [4], manual emergency release [6], and a relay valve (URV-M) [7] that is held closed by pneumatic pressure in the dry pilot line [10]. The water pressure trapped in the control chamber holds the diaphragm against the valve seat, sealing it drip-tight and keeping the system pipes dry.

Under FIRE conditions, water pressure is released from the control chamber by the URV-M opening automatically in response to a decrease in pneumatic dry pilot-line pressure. This latches the 400E-4M deluge valve open, allowing water to flow into the system piping and to the alarm devices.

System P&ID



Components

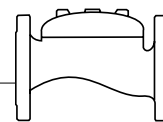
- 1 BERMAD 400E Deluge Valve
- 2 Priming Ball Valve
- 3 Priming Strainer
- 4 Check Valve
- 5 Restriction Orifice
- 6 Manual Emergency Release
- 7 URV-2-M Relay Valve

Optional System Items

- ZS Limit Switch Assembly
- I Visual Indicator
- DV Drain Valve*
- PS Pressure Switch
- AMD Air Maintenance Device, AMD-76
- W Water Motor Alarm
- DC Automatic Drip Check Valve*
- PI Pressure Indicator*
- AV 3-Way Alarm Ball Valve*

* Included with suffix A in valve code (drain and indicating components)

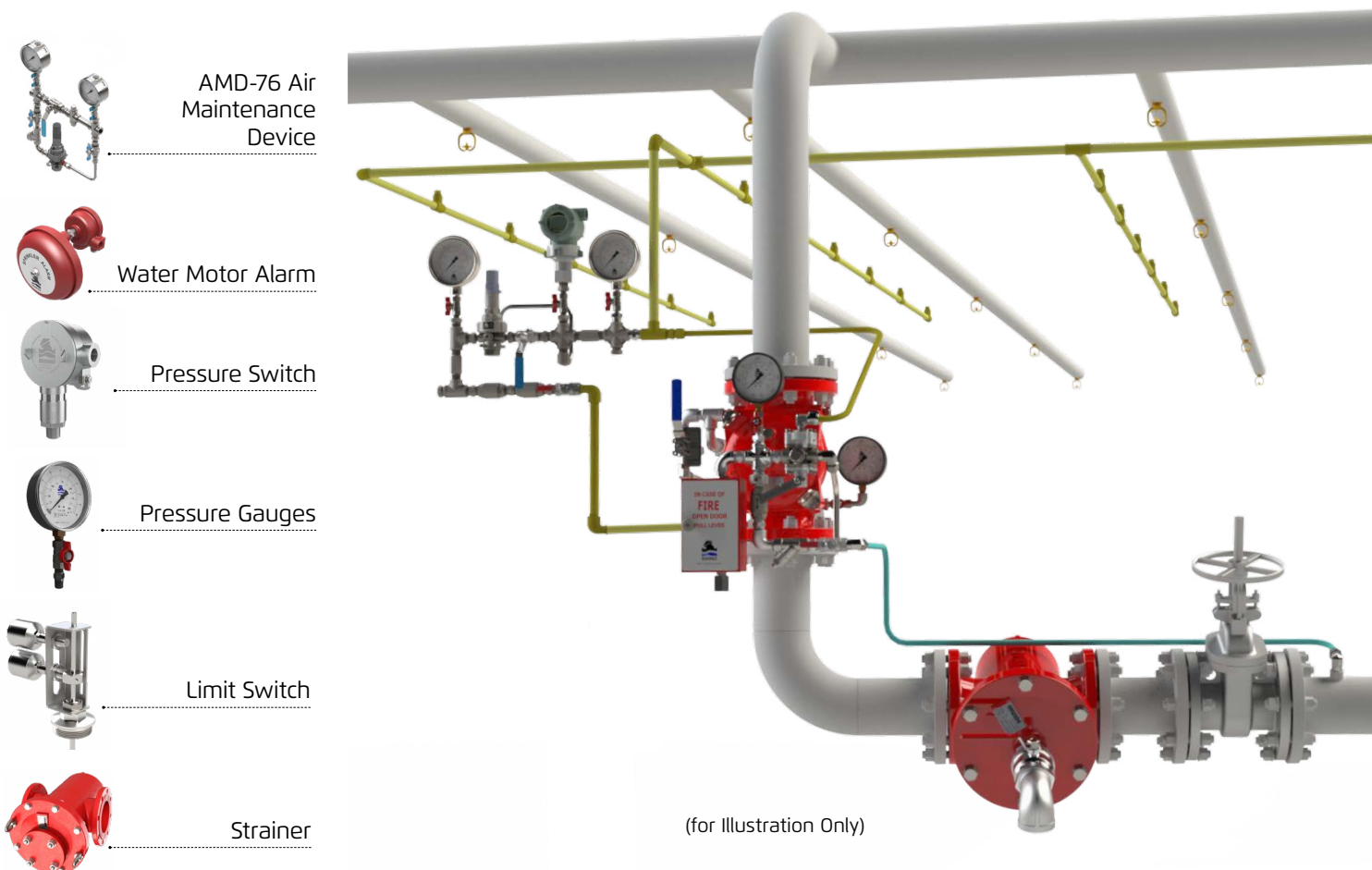
See code designations and additional Factory Fitted Options on page 4



System Installation

A typical installation of the BERMAD model 400E-4M features automatic actuation via a pneumatic universal relay valve, triggered by a fusible plug loop. When fitted with a limit switch, the valve can send a feedback signal to a remote valve position monitoring system.

Optional System Items



Suggested Specifications

The deluge valve shall be UL-listed.

The valve shall have an unobstructed flow path, with no stem guide or supporting ribs.

Valve actuation shall be accomplished by a single-piece, rolling diaphragm bonded with a rugged radial seal disk with VRSD Technology.

The diaphragm assembly shall be the only moving part.

The deluge valve shall include a latching relay, a Y-type strainer, a ball drain valve, an automatic drip-check with manual override, 4-inch pressure gauges, and a manual emergency release housed in a 316 stainless steel box.

Removing the valve cover for inspection and full maintenance shall be in line and not require removal of the valve from the piping line.

The deluge valve and its entire control trim shall be supplied pre-assembled and hydraulically tested in compliance to the UL 260 standard, by a factory certified to ISO 9000 and 9001 quality assurance standard

BERMAD Fire Protection

Model FP 400E - 4M

400E Series

Technical Data

Available Sizes (inch)

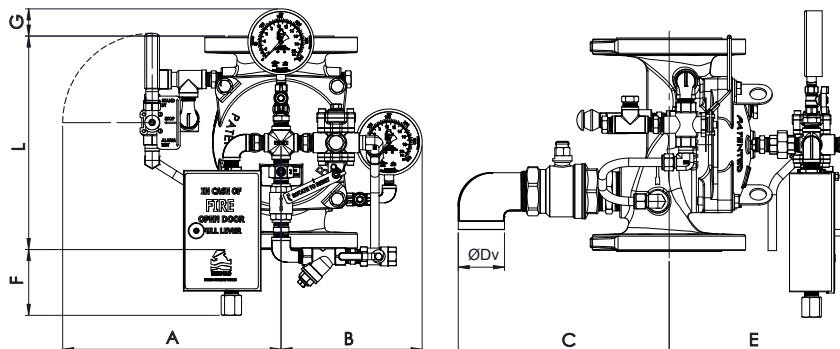
- Flanged - 1½, 2, 2½, 3, 4, 6, 8, 10 & 12"
- Grooved - 2, 3, 4, 6 & 8"

Pressure Rating

- 17.2 bar / 250 psi

Elastomer

- HTNR with VRSD - Fabric Reinforced High Temperature, see engineering data



Valve Size	1½" DN40		2" DN50		2½" DN65		3" DN80		4" DN100		6" DN150		8" DN200		10" DN250		12" DN300	
	mm	in	mm	in	mm	in	mm	in	mm	in	mm	in	mm	in	mm	in	mm	in
L #150	205	8.1	205	8.1	205	8.1	257	10.1	320	12.6	415	16.3	500	19.7	605	23.8	725	28.5
L Grooved	-	-	205	8.1	-	-	250	9.8	320	12.6	415	16.3	500	19.7	-	-	-	-
A	313	12.3	313	12.3	325	12.8	345	13.6	328	12.9	349	13.7	383	15.1	396	15.6	438	17.2
B	191	7.5	191	7.5	196	7.7	205	8.1	212	8.3	204	8.0	270	10.6	280	11.0	333	13.1
C	199	7.8	199	7.8	253	10.0	266	10.5	316	12.4	347	13.7	364	14.3	384	15.1	422	16.6
ØDv	¾"		¾"		1½"		1½"		2"		2"		2"		2"		2"	
E	203	8.0	203	8.0	205	8.1	238	9.4	258	10.2	334	13.1	385	15.2	382	15.0	513	20.2
F	157	6.2	157	6.2	157	6.2	131	5.2	99	3.9	52	2.0	9	0.4	-	-	-	-
G	100	3.9	100	3.9	74	2.9	43	1.7	-	-	-	-	-	-	-	-	-	-
Kg / lb	14 / 31		15 / 33		17 / 37		28 / 62		40 / 88		84 / 185		147 / 323		162 / 356		242 / 532	

IMPORTANT: Dimensions for the trim envelope or extents refer to a vertical orientation and may vary with specific component positioning - allow a tolerance of at least ±10%.

Valve Code Designations

FP	6"	400E-4M	03	V	C	A5	PR	NN	NDVW																																																																																																															
<table><tr><th>Category</th><th>code</th></tr><tr><td>Standard</td><td>FP</td></tr><tr><td>Seawater</td><td>FS</td></tr><tr><td>Foam Concentrate</td><td>FC</td></tr></table>	Category	code	Standard	FP	Seawater	FS	Foam Concentrate	FC	<table><tr><th>Valve Size</th><th></th></tr><tr><td>1½"</td><td>40 mm</td></tr><tr><td>2"</td><td>50 mm</td></tr><tr><td>2½"</td><td>60 mm</td></tr><tr><td>3"</td><td>80 mm</td></tr><tr><td>4"</td><td>100 mm</td></tr><tr><td>6"</td><td>150 mm</td></tr><tr><td>8"</td><td>200 mm</td></tr><tr><td>10"</td><td>250 mm</td></tr><tr><td>12"</td><td>300 mm</td></tr></table>	Valve Size		1½"	40 mm	2"	50 mm	2½"	60 mm	3"	80 mm	4"	100 mm	6"	150 mm	8"	200 mm	10"	250 mm	12"	300 mm	<table><tr><th>Installation</th><th>code</th></tr><tr><td>Vertical</td><td>V</td></tr><tr><td>Horizontal</td><td>H</td></tr></table>	Installation	code	Vertical	V	Horizontal	H	<table><tr><th>Material Body & Cover ⁽¹⁾</th><th>code</th></tr><tr><td>Ductile Iron A356 ⁽²⁾</td><td>C</td></tr><tr><td>Steel ASTM A216 WCB ⁽²⁾</td><td>S</td></tr><tr><td>Stainless Steel 316</td><td>N</td></tr><tr><td>Nickel Al Bronze C95800</td><td>U</td></tr><tr><td>Super Duplex Grade 5A</td><td>D</td></tr></table>	Material Body & Cover ⁽¹⁾	code	Ductile Iron A356 ⁽²⁾	C	Steel ASTM A216 WCB ⁽²⁾	S	Stainless Steel 316	N	Nickel Al Bronze C95800	U	Super Duplex Grade 5A	D	<table><tr><th>Coating</th><th>code</th></tr><tr><td>Polyester Red</td><td>PR</td></tr><tr><td>High Build Epoxy</td><td>ER</td></tr><tr><td>Uncoated</td><td>UC</td></tr></table>	Coating	code	Polyester Red	PR	High Build Epoxy	ER	Uncoated	UC	<table><tr><th>Tubing & Fittings</th><th>Code</th></tr><tr><td>Stainless Steel 316</td><td>NN</td></tr><tr><td>Monel 400</td><td>MM</td></tr><tr><td>Super Duplex</td><td>DD</td></tr></table>	Tubing & Fittings	Code	Stainless Steel 316	NN	Monel 400	MM	Super Duplex	DD	<table><tr><th>Speed Control</th><th>code</th></tr><tr><td>Opening speed</td><td>02</td></tr><tr><td>Closing speed</td><td>01</td></tr><tr><td>Opening & Closing speed</td><td>03</td></tr><tr><td>None</td><td>-</td></tr></table>	Speed Control	code	Opening speed	02	Closing speed	01	Opening & Closing speed	03	None	-	<table><tr><th>End Connections</th><th>code</th></tr><tr><td>ANSI#150RF</td><td>A5</td></tr><tr><td>ANSI#150FF</td><td>a5</td></tr><tr><td>ISO PN16</td><td>16</td></tr><tr><td>Grooved ANSI C606</td><td>VI</td></tr></table>	End Connections	code	ANSI#150RF	A5	ANSI#150FF	a5	ISO PN16	16	Grooved ANSI C606	VI	<table><tr><th>Factory Fitted Options</th><th>Code</th></tr><tr><td>General Purpose NEMA-4 Pressure Switch ⁽³⁾</td><td>P</td></tr><tr><td>Ex Proof NEC, Div.1 Pressure Switch ⁽³⁾</td><td>P7</td></tr><tr><td>Ex d ATEX Pressure Switch ⁽³⁾</td><td>P9</td></tr><tr><td>Ex d Pressure Switch, SS316 Enclosure ⁽³⁾</td><td>P9Jn</td></tr><tr><td>Ex d Pressure Switch, SS316 Enclosure, Monel Sensor ⁽³⁾</td><td>P9mJn</td></tr><tr><td>Single Limit Switch, General Purpose</td><td>S</td></tr><tr><td>Single Ex d Proximity limit Switch</td><td>S9</td></tr><tr><td>Double Ex d Proximity Limit Switch</td><td>SS9</td></tr><tr><td>Double Ex d Proximity Limit Switch with SS316 Junction Box</td><td>SS9Jn</td></tr><tr><td>Pressure Gauge Assembly ⁽³⁾</td><td>6</td></tr><tr><td>S.S Glycerin Pressure Gauge Assembly ⁽³⁾</td><td>6n</td></tr><tr><td>Monel Pressure Gauge Assembly</td><td>6m</td></tr><tr><td>Drain Valve</td><td>DV</td></tr><tr><td>Manual Emergency Release Box</td><td>D</td></tr></table>	Factory Fitted Options	Code	General Purpose NEMA-4 Pressure Switch ⁽³⁾	P	Ex Proof NEC, Div.1 Pressure Switch ⁽³⁾	P7	Ex d ATEX Pressure Switch ⁽³⁾	P9	Ex d Pressure Switch, SS316 Enclosure ⁽³⁾	P9Jn	Ex d Pressure Switch, SS316 Enclosure, Monel Sensor ⁽³⁾	P9mJn	Single Limit Switch, General Purpose	S	Single Ex d Proximity limit Switch	S9	Double Ex d Proximity Limit Switch	SS9	Double Ex d Proximity Limit Switch with SS316 Junction Box	SS9Jn	Pressure Gauge Assembly ⁽³⁾	6	S.S Glycerin Pressure Gauge Assembly ⁽³⁾	6n	Monel Pressure Gauge Assembly	6m	Drain Valve	DV	Manual Emergency Release Box	D
Category	code																																																																																																																							
Standard	FP																																																																																																																							
Seawater	FS																																																																																																																							
Foam Concentrate	FC																																																																																																																							
Valve Size																																																																																																																								
1½"	40 mm																																																																																																																							
2"	50 mm																																																																																																																							
2½"	60 mm																																																																																																																							
3"	80 mm																																																																																																																							
4"	100 mm																																																																																																																							
6"	150 mm																																																																																																																							
8"	200 mm																																																																																																																							
10"	250 mm																																																																																																																							
12"	300 mm																																																																																																																							
Installation	code																																																																																																																							
Vertical	V																																																																																																																							
Horizontal	H																																																																																																																							
Material Body & Cover ⁽¹⁾	code																																																																																																																							
Ductile Iron A356 ⁽²⁾	C																																																																																																																							
Steel ASTM A216 WCB ⁽²⁾	S																																																																																																																							
Stainless Steel 316	N																																																																																																																							
Nickel Al Bronze C95800	U																																																																																																																							
Super Duplex Grade 5A	D																																																																																																																							
Coating	code																																																																																																																							
Polyester Red	PR																																																																																																																							
High Build Epoxy	ER																																																																																																																							
Uncoated	UC																																																																																																																							
Tubing & Fittings	Code																																																																																																																							
Stainless Steel 316	NN																																																																																																																							
Monel 400	MM																																																																																																																							
Super Duplex	DD																																																																																																																							
Speed Control	code																																																																																																																							
Opening speed	02																																																																																																																							
Closing speed	01																																																																																																																							
Opening & Closing speed	03																																																																																																																							
None	-																																																																																																																							
End Connections	code																																																																																																																							
ANSI#150RF	A5																																																																																																																							
ANSI#150FF	a5																																																																																																																							
ISO PN16	16																																																																																																																							
Grooved ANSI C606	VI																																																																																																																							
Factory Fitted Options	Code																																																																																																																							
General Purpose NEMA-4 Pressure Switch ⁽³⁾	P																																																																																																																							
Ex Proof NEC, Div.1 Pressure Switch ⁽³⁾	P7																																																																																																																							
Ex d ATEX Pressure Switch ⁽³⁾	P9																																																																																																																							
Ex d Pressure Switch, SS316 Enclosure ⁽³⁾	P9Jn																																																																																																																							
Ex d Pressure Switch, SS316 Enclosure, Monel Sensor ⁽³⁾	P9mJn																																																																																																																							
Single Limit Switch, General Purpose	S																																																																																																																							
Single Ex d Proximity limit Switch	S9																																																																																																																							
Double Ex d Proximity Limit Switch	SS9																																																																																																																							
Double Ex d Proximity Limit Switch with SS316 Junction Box	SS9Jn																																																																																																																							
Pressure Gauge Assembly ⁽³⁾	6																																																																																																																							
S.S Glycerin Pressure Gauge Assembly ⁽³⁾	6n																																																																																																																							
Monel Pressure Gauge Assembly	6m																																																																																																																							
Drain Valve	DV																																																																																																																							
Manual Emergency Release Box	D																																																																																																																							

Notes:

- ⁽¹⁾ Other materials available, see engineering data
- ⁽²⁾ Coated internally and externally
- ⁽³⁾ Supplied loose
- ⁽⁴⁾ Consult BERMAD for availability.

* More options available - contact BERMAD



www.bermad.com

© Copyright 2013-2023 Bermad CS Ltd. All Rights Reserved. The information contained in this document is subject to change without notice. BERMAD shall not be liable for any errors contained herein. August 2023