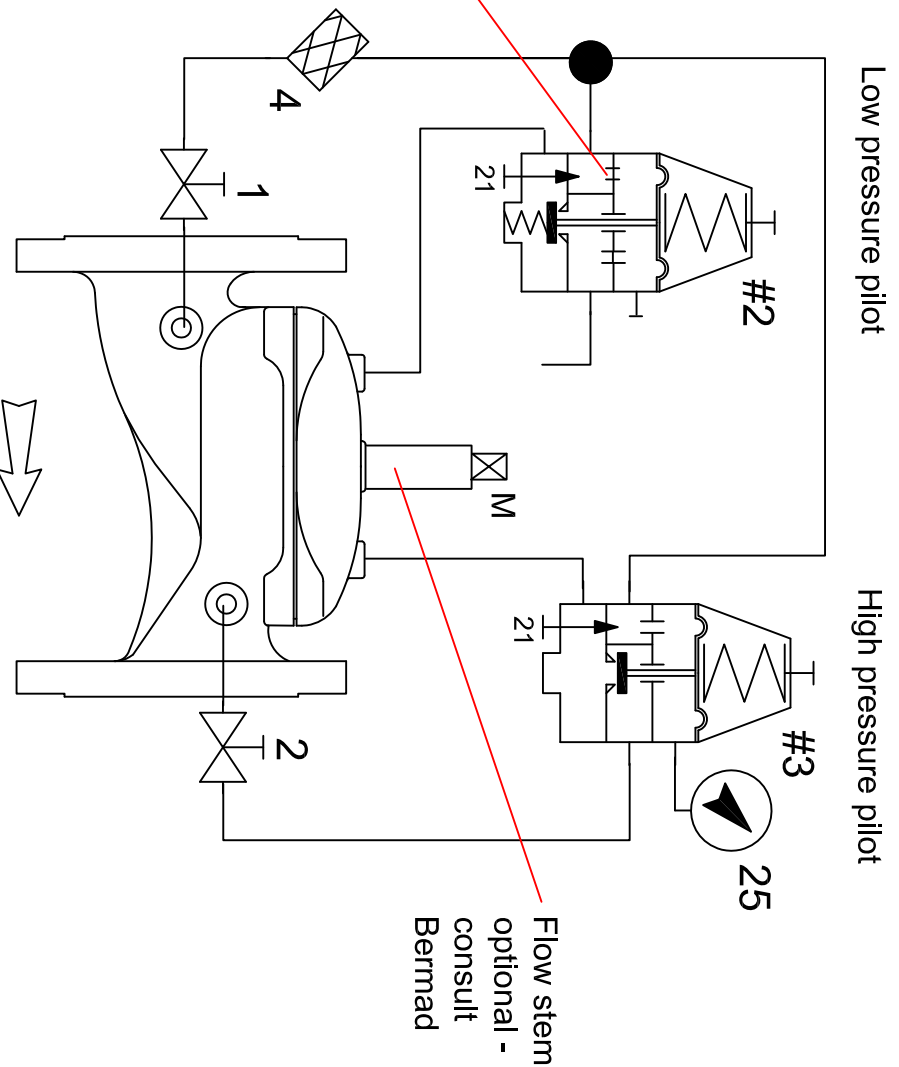


Parts List

1. Inlet ball valve 3/8 "
2. Outlet ball valve 3/8"
4. Inlet strainer 3/8"
- #2 Low pressure relief pilot
- #3 High Pressure relief pilot
- 21 Needle valve for valve closure control speed

Note
Grub screw fitted in C port and removed under Z port for low pressure pilot only



Pilot adjustment settings
 Clockwise to increase pressure
 Anti-clockwise to reduce pressure
 1 rotation = 190Kpa

Valve closure speed control
 Close 21 needle valve on #3 fully
 Open 21 needle valve on #2 approx 1/2 turn
 Turn clockwise to slow down and anti-clockwise to increase closing time

Email Address collin@bermad.com.au	Project : Model 435 Surge Anticipation Valve	Email Address collin@bermad.com.au Revision Number / Date 1. 5.5.15	Bermad Water Technologies 2 Inglewood Drive, Thomastown, Vic 3074 Ph (03) 9464 5949 Fax (03) 9464 2382	Drawn by : Date :	Drawing Number :
---------------------------------------	--	--	--	----------------------	------------------