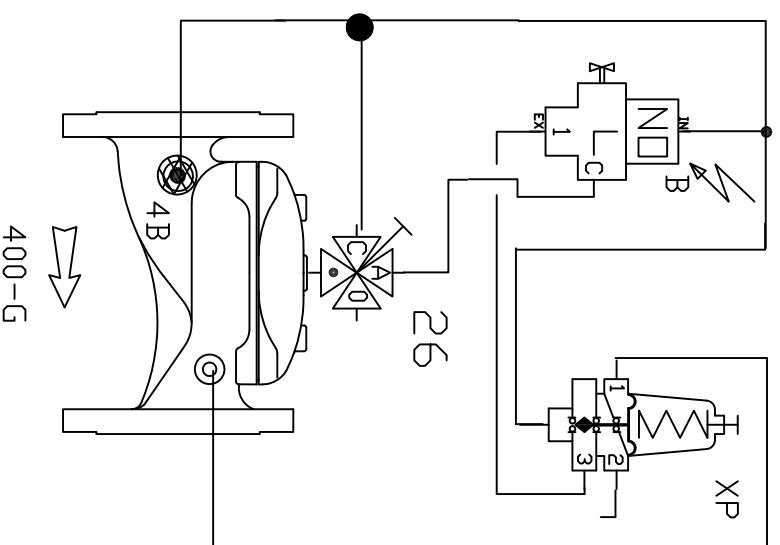
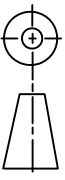


Valve function
Valve is normally closed via a three way NO solenoid.

When the manual over-ride on the solenoid (or coil is energised), the passage opens between the coil and the positioning pilot, and the valve starts to regulate the downstream pressure.

Suitable for valve sizes 40mm up to 100mm



Components Valve - 400 Series flanged valve T/D 4B - 1/4" plastic finger filter XP - PCX-A-P 3 way pilot B - Solenoid S-390-3W-R-NO-24VAC-BO Fittings - Bernad FC series 8mm Tube - 8mm Tefen		Not to Scale 	Bernad Water Technologies 7 Inglewood Drive, Thomastown, Vic 3074 Ph (03) 9464 5949 Fax (03) 9464 2382	Drawn by : Date :
Email Address colin@bernad.com.au	Revision Number / Date	Project : Model No IR-4-ASTD-G-420-XZ-PCP-55 Reducing with Solenoid	Drawing Number :	