

Pressure Sensing Separation Diaphragm

This device is used to protect the pressure sensing chambers of pilots (and pressure gauges) from highly corrosive fluids, high viscosity fluids, or fluids with suspended solids.

It has two chambers separated by a diaphragm. The sensed system pressure is introduced to one chamber, applying force on the diaphragm that "transmits" it to the second chamber. The second chamber and the pilot sensing chamber are connected and are both filled with a non-aggressive, stable fluid.

Technical Data

Pressure rating: 25 bar (350 psi)

Standard materials:

Body: Stainless Steel 303

Diaphragm: NBR, nylon fabric reinforced

Optional materials:

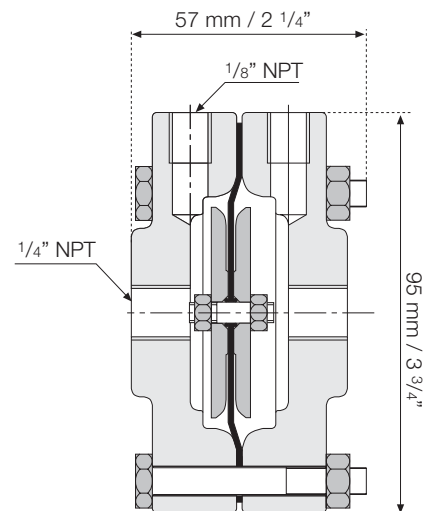
Metal parts: Stainless Steel 316

Seals: FPM

Ports: 1/4" NPT

Air venting ports: 1/8" NPT

Maximum temperature: 80°C (180°F)



Weight: 2.2 Kg / 4.9 lbs.