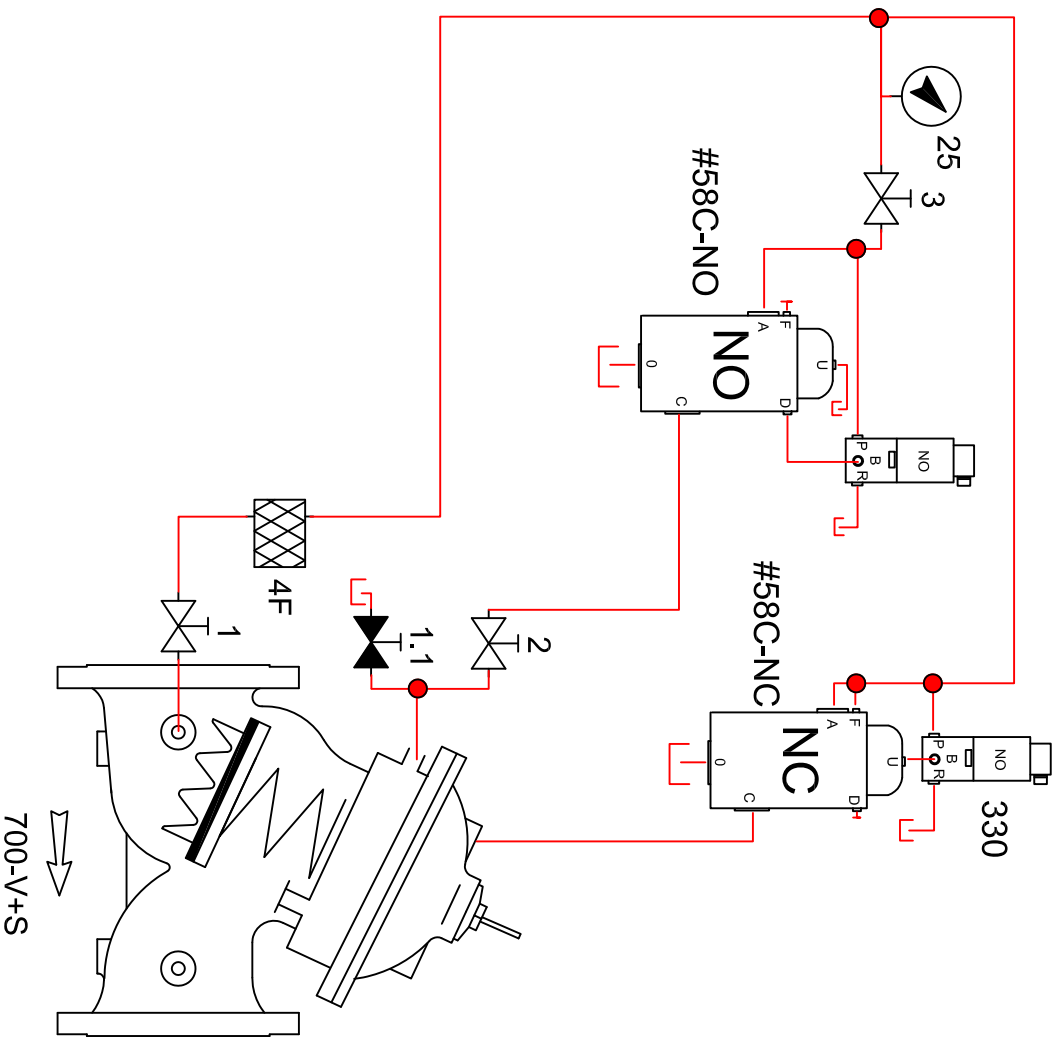


Components	
#1 , 2 , 3	NO ball valve
#1.1	NC ball valve
#4F	Bermad LC Filter
#25	Pressure gauge
#58C-NO	DN20 DC 3 way relay NO
#58C-NC	DN20 SC 3 way relay NC
700-V+S	700 series double chamber valve with V port and spring
330	Burkert 330 24VDC ½ NO solenoid



Note:
 Large diameter relays used for extremely fast operation. Minimum operation pressure 0.5 bar
 Valve fully strokes to 100% open and then 100% closed. If controlled opening and closing is required, speed controllers can be fitted to the vent from the relay's in port 0.

Not to Scale

Email Address
 colin@bermad.com.au
 Revision Number / Date

Bermad Water Technologies
 26 Brand Drive , Thomastown , Vic 3074
 Ph (03) 9464 2374 Fax (03) 9464 2382

Project : 710-B fast opening valve with dual 58C relays and Burkert solenoids 24VDC

Drawn by :
 Date :
 Drawing Number :

