

## Operation of PRV

Turn adjustment bolt on PB3 clockwise fully.

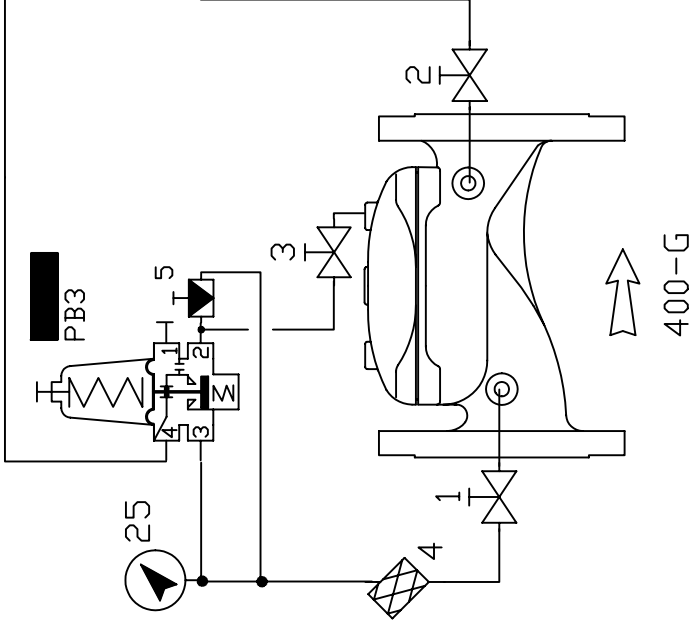
Open valves 1 , 2 and 3

Turn needle valve in clockwise fully and back off 1-1/2 turns

Apply pressure to inlet of valve and vent air from chamber by relaxing one of brass fittings.

Turn adjustment bolt on PB3 anti-clockwise slowly until valve opens. Continue to turn until desired pressure is achieved and tighten the locknut on the pilot.

Valve is now set.



## Parts

- 1 Inlet ball valve
- 2 Outlet ball valve (valve close)
- 3 Bonnet ball valve (freeze valve)
- 4 Inlet strainer
- 5 Needle Valve
- 6 PB3 2 way sustaining pilot

**Bermad Water Technologies**  
 2 Inglewood Drive , Thomastown , Vic 3074  
 Ph (03) 9464 5949 Fax (03) 9464 2382

Drawn by :  
 Date :

Project : 430-PB3

Drawing Number :

Email Address  
 bermad.colin@smart.net.au

Revision Number / Date



## Pressure Sustaining Pilot Valve

This is a direct acting valve, actuated by a pressure responsive diaphragm, which tends to reach equilibrium with the set spring force. When used in a pressure relief/sustaining circuit, the pilot modulates open as upstream pressure rises above set point.

### Features

- Internal or external pressure sensing
- Differential pressure sensing
- Direct pressure gauge installation

### Typical Applications

- Pressure relief/sustaining valve sizes 1 1/2"-4" (Standard model #3PB).
- Differential Pressure sustaining valve sizes 1 1/2"-4" (Modified to differential sensing #3PB-D)

### Technical Data

**Pressure Rating:** 25 bar (350 psi)

**Working Temperature:** Water up to 80°C (180°F)

**Flow Factor:** Kv 0.48 (Cv 0.56)

**Standard Materials:**

**Body:** Bronze

**Cover:** Brass

**Elastomers:** NBR

**Internals:** Stainless Steel & Brass

**Spring:** Galvanized Steel

**Optional Materials:**

**Metal Parts:** Stainless Steel, Nickel Aluminum Bronze, Hastalloy

**Elastomers:** FPM (Viton®)

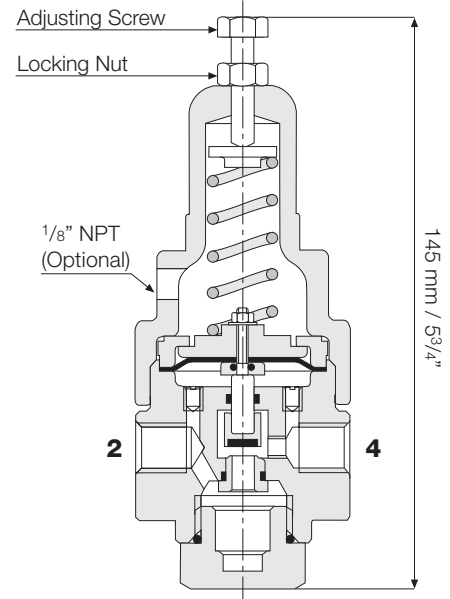
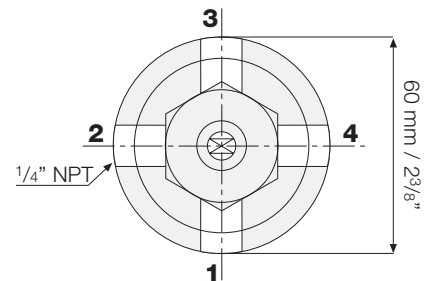
### Adjustment Range

Spring	Pressure		
	bar	psi	
M	1-16	15-230	Standard
N	0.8-6.5	11-95	Optional
J	0.2-1.7	3-25	

### Connections

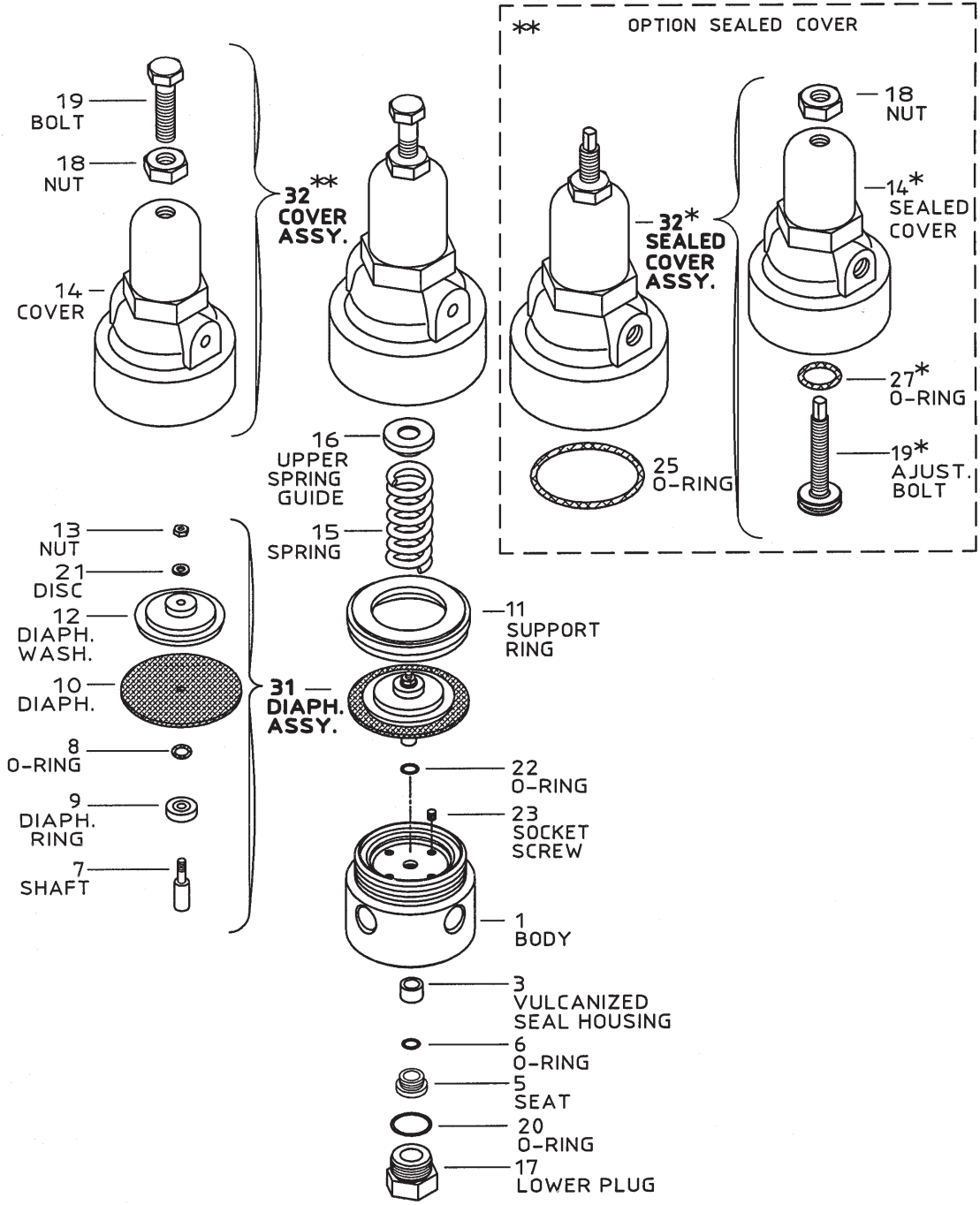
- 1 - Remote sensing or pressure gauge
- 2 - Valve control chamber
- 3 - Remote sensing or pressure gauge
- 4 - Downstream

\* Upstream pressure is connected to valve control chamber via a restriction.

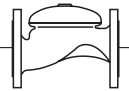


**Weight: 1.5 Kg / 3.3 lbs.**

## #3PB 2-way Pressure Sustaining Pilot Valve



\* - FOR SEALED COVER ONLY



## Basic Control Valves for Waterworks (WW)

Sizes: 2"-10"

