

# MeiStream Plus

Class C Bulkmeter for cold potable water DN 40...150 PN 16



## Main characteristics

- Meter with MID pattern approval acc. to annex MI001
- Pattern approved removable measuring insert (75/33/EEC)
- Unique measuring range
- High overload capability
- Metrological class C acc. to 75/33/EEC in horizontal installation
- Meter body in short (WP) and long (WS) overall length acc. to DIN 19625 and EN 14154 available
- Measuring insert fits the meter body of WP-Dynamic
- Used materials are temperature resistant up to 70°C
- Register prepared for HRI-Mei pick-up
- Use of optical pulsers type OD is still possible

## Applications

- Measurement for billing of cold potable water up to 50° C
- Measurement of medium and high flowrates
- Measurement of low flow e. g. in light load periods
- For leakage control

## Available options

- HRI-Mei factory mounted
- Version for use in hazardous area
- 1/4" pressure monitoring port

## Approval mark

### Meter cpl.

Marking CE M-XX\* 0102 \* year of production

DE-09-MI001-PTB 012

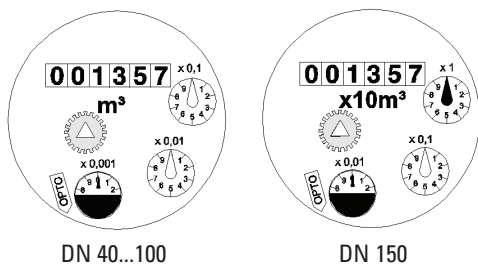
### Measuring insert

D06	Size:	DN 40 ... 150
6.132.48	Marking:	metrological class C; 30°C

### Performance Data

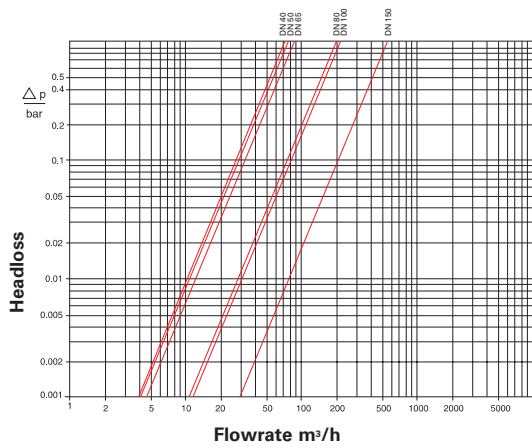
Size		DN	40	50	65	80	100	150
Q5	Max. Peak Flow	m <sup>3</sup> /h	50	55	60	120	160	400
Q4	Overload Flowrate acc. to MID	m <sup>3</sup> /h	31,25	31,25	50	78,75	125	312,5
Q3'	Continuous Flow	m <sup>3</sup> /h	30	35	40	63	100	250
Q3	Permanent Flowrate acc. to MID	m <sup>3</sup> /h	25	25	40	63	100	250
Q2	Transitional Flowrate horizontal acc. to MID	m <sup>3</sup> /h	0,13	0,13	0,16	0,25	0,4	0,63
Q1	Minimum Flowrate horizontal acc. to MID	m <sup>3</sup> /h	0,08	0,08	0,1	0,16	0,25	0,4
Q1'	Minimum Flow horizontal	m <sup>3</sup> /h	0,08	0,07	0,1	0,13	0,2	0,35
Q3/Q1	max. Ratio	m <sup>3</sup> /h	315	315	400	400	400	630
Q3/Q1	Standard Marking		315	315	315	315	315	315
	Starting Flow		0,03	0,03	0,04	0,04	0,07	0,12
Δp	Headloss at Q3 acc. to EN 14154	bar	0,09	0,08	0,17	0,07	0,16	0,14

## Dial

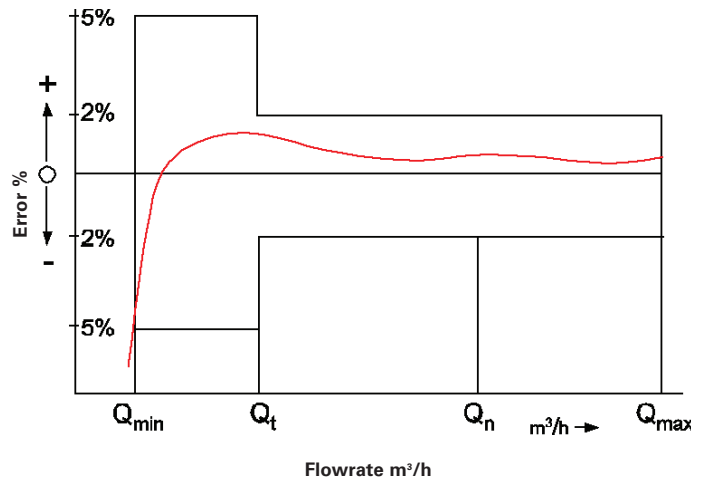


Nominal diameter DN	Smallest reading m <sup>3</sup>	Max. reading m <sup>3</sup>
40 ... 100	0.0005	1,000,000
150	0.005	10,000,000



## Typical Headloss





## Typical Error Curve

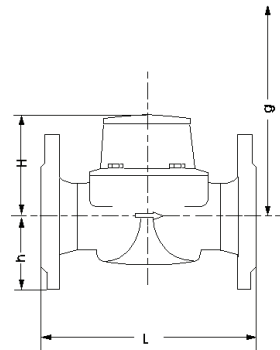


## Pulse Values

Pulsar Type	Pulse Value	DN 40 ... 100	DN 150
HRI-Mei (Leaflet see LS 8400)		0.01; 0.05; 0.1 or 1 m³	0.1; 0.5; 1 or 10 m³
OD 01 (Leaflet see LB 8300)		0.001 m³	0.01 m³
OD 03 (Leaflet see LB 8300)		0.01 m³	0.1 m³

Pipe	horizontal	
Meter head	upwards	

## Dimension Picture



## Installation Requirements

### Installation

- Unrestricted straight pipe upstream  $0 \times DN$
- No abrupt restrictions directly downstream of the meter

## Materials

Body	Cast iron
Measuring element	Plastic
Rotor	Plastic
We also use the following materials	Brass Stainless steel

## Available Lengths

Nominal diameter		40	50	65	80	100	150
Overall length L WS (DIN / ISO)	mm		270 / 300	300	300 / 350	360 / 350	500
Overall length L WP (DIN / ISO)	mm	220	200	200	225 / 200	250	300

## Dimension and Weights PN 16

Nominal diameter			40	50	50	50	65	65	80	80
Dimensions	Overall length	L mm	220	200	270	300	200	300	200	225
	Height	H mm	120	120	120	120	120	120	150	150
		h mm	69	73	73	73	85	85	95	95
	Dismantling height	g mm	200	200	200	200	200	200	270	270
Weights	Meter cpl.	kg	7.5	7.8	9.6	9.9	10.1	12.0	13.8	14.2
	Measuring insert	kg	1.5	1.5	1.5	1.5	1.5	1.5	3.2	3.2
	Body	kg	6.0	6.3	8.1	8.4	8.6	10.5	10.6	11.0

Nominal diameter			80	80	100	100	100	150	150
Dimensions	Overall length	L mm	300	350	250	350	360	300	500
	Height	H mm	150	150	150	150	150	177	177
		h mm	95	95	105	105	105	135	135
	Dismantling height	g mm	270	270	270	270	270	356	356
Weights	Meter cpl.	kg	16.3	17.7	18.2	20.0	20.2	35.9	44.2
	Measuring insert	kg	3.2	3.2	3.2	3.2	3.2	5.9	5.9
	Body	kg	13.1	14.5	15.0	16.8	17.0	30.0	38.3

## Order Information

Description	Overall Length in mm	Order Number
MeiStream Plus DN 40 50° C / PN16	220	51401 AHQ1C B1A1X
MeiStream Plus DN 50 50° C / PN16	200	51401 BHQ1A B1A1X
MeiStream Plus DN 50 50° C / PN16	270	51401 BHQ1F B1A1X
MeiStream Plus DN 50 50° C / PN16	300	51401 BHQ1G B1A1X
MeiStream Plus DN 65 50° C / PN16	200	51401 CIQ1A B1A1X
MeiStream Plus DN 65 50° C / PN16	300	51401 CIQ1G B1A1X
MeiStream Plus DN 80 50° C / PN16	200	51401 DKQ1A B1A1X
MeiStream Plus DN 80 50° C / PN16	225	51401 DKQ1D B1A1X
MeiStream Plus DN 80 50° C / PN16	300	51401 DKQ1G B1A1X
MeiStream Plus DN 80 50° C / PN16	350	51401 DKQ1I B1A1X
MeiStream Plus DN 100 50° C / PN16	250	51401 ELQ1E B1A1X
MeiStream Plus DN 100 50° C / PN16	350	51401 ELQ1I B1A1X
MeiStream Plus DN 100 50° C / PN16	360	51401 ELQ1J B1A1X
MeiStream Plus DN 150 50° C / PN16	300	51401 GNQ1G B1A1X
MeiStream Plus DN 150 50° C / PN16	500	51101 GNQ1N B1A1X
MeiStream DN 150 50° C / PN16	500	50401 GOL1N B1A1X



Certified according to ISO 9001  
Quality Management System OQS Reg.no. 3496/0

Bermad Australia Ph (03) 9464 5421



### UK & Ireland Enquiries

Sensus Metering Systems 11 The Quadrangle, Abbey Park, Romsey, Hampshire SO51 9DL UK  
T: +44 (0) 1794 526100 F: +44 (0) 1794 526101 Email: [info.gb@sensus.com](mailto:info.gb@sensus.com) [www.sensus.com](http://www.sensus.com)

### International Enquiries

Sensus Metering Systems GmbH Hannover Meineckestraße 10, D-30880 Laatzen Germany  
T: +49 (0) 5102 74-0 F: +49 (0) 5102 74-3341 Email: [info.int@sensus.com](mailto:info.int@sensus.com) [www.sensus.com](http://www.sensus.com)